



The Burl  
Member Chapter

A monthly newsletter for the  
Willamette Valley Woodturners

---

Volume 15, Issue 7

<http://www.WillametteValleyWoodturners.com>

July, 2011

---

Next Meeting  
Thursday, July 14, 2011

Center 50+  
2615 Portland Rd, NE. Salem, OR 97303  
(503) 588-6303

## Chip Chatter

I would like to give a special thanks to Darren Wellington for his clam shell box demonstration at last month's meeting and workshop on the following Saturday. During the first years of the club, all demonstrators were club members. I would like to see some other members offer to do a club demonstration.

As in past years August and September are particularly busy for the club. We have two demonstration opportunities: in July, the Steam-up at the Powerland Museums in Brooks, and in September the State Fair. Both events give us the opportunity for woodturning education by showing others that turning can be fun and letting them see what is involved in woodturning. This may or may not translate to new club members but anyone who has volunteered in past years will agree that we have met a lot of great people and demonstrating is a lot of fun. Mark July 30 & 31 for the steam up and August 31 (Wed) through September 5 (Monday) for the fair on your calendar and join us to staff our demo booths. Sign-up sheets for each event will be available at the July meeting. If you have questions, or would like more information, contact Walt Thies about the Steam Up and Bob Hutchinson about the fair.

Eric Loftstrom will be our demonstrator at the July meeting. There is still space available for his all day demonstration on July 15th and for his hands on workshop on July 16th and 17th. Additional information is available further on in the BURL.

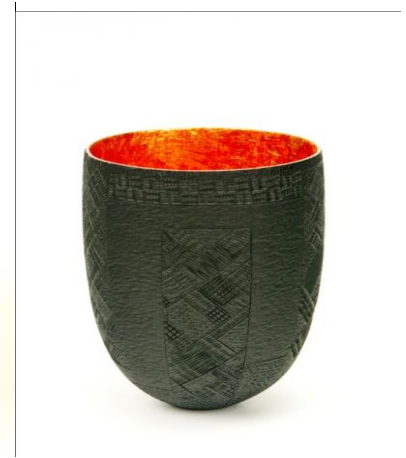
Keep the chips flying

Bruce Stangeby, President

# Club Business

## Current & Upcoming Events

July Demonstration (Thursday, July 14, 2011)



*There is nothing more powerful than being inspired by an idea and having the confidence to create that one-of-a-kind piece on the lathe...this is what woodturning is all about!- E.Lofstrom*

Once again we will have the pleasure of Eric Lofstrom as our demonstrator.

**Thursday night's demo-** "Square-Winged Bowl" During this demonstration, I will create a bowl with an outward flowing square rim. Created from a square-corner blank with basic turning tools, this project will showcase the bowl gouge, finishing scrapers, and several methods of mounting a face grain blank to the lathe for turning. I will emphasize tool control and creating a flowing form, while aiming for the cleanest cuts possible from my tools. The square-winged bowl demonstration is sure to tease your mind and set your imagination flying!

**Friday's all-day demo-** "Spindle and Face Grain Technique Building Treasures" (spinning top, egg, sphere, natural edge bowl, and square-winged box). This all-day demonstration will showcase several projects, ranging from very simple to advanced turning and embellishing techniques. The morning will focus on showing fundamental spindle turning techniques I use to turn spinning tops and eggs. I will complete the morning session by demonstrating the turning and chucking methods I use to create wooden spheres. After lunch, I will turn a face grain bowl with a natural edge, then complete the day with turning a square-winged box and showing how to highlight a project with gilding. All projects will focus on tool control, form, and exploring embellishments. The day's tuning will showcase several tools; skew, spindle roughing gouge, parting tool, bowl gouges, scrapers, chucks, etc. All skills and projects turned during this day's demo are worth adding to every turner's toolbox of techniques!

**Saturday/Sunday's hands-on-workshop** "Spindle and End Grain Techniques + Embellishing with Metal Leaf" (tops, eggs, end grain bowls, and boxes). This hands-on class is designed to equip you with basic skills to create small turned treasures using small spindle and end grain pieces of wood. In addition to learning basic end grain turning techniques, we will explore embellishing techniques to create truly unique artistic pieces. Using basic turning tools, the first day will be devoted to turning "Technique Building Treasures" such as spinning tops and eggs, and small end grain bowls. Emphasis will be on tool control, form, and simple embellishments. On the second day, we will focus on turning end grain boxes and explore basic gilding

techniques. Students will take home several samples created during the class for inspiration once back in their own shop.

For those of you taking the workshop, here is the materials list you will need to bring.

**MATERIAL LIST:**

- 1) Spinning Top Blanks= 2"x2"x6" (x3/participant) of clear, straight-grain dry eastern maple spindle blanks
- 2) Egg Blanks= 2"x2"x6" (x3/participant) of clear, straight-grain wet or dry maple, alder, cherry, or madrone spindle blanks
- 3) Bowl Blanks (end grain)= 3"x3"x4" (x2/participant) of dry maple spindle blanks
- 4) Box Blanks (end grain)= 3"x3"x4" (x2/participant) of dry maple spindle blanks

Here is the list of tools...don't worry about chucks, as I have enough for each lathe...

- Bowl Gouge- Fingernail Grind (1/2" dia. shank)
- Spindle Gouge- Fingernail Grind (1/2" dia. Shank)
- Skew (med./lg.)
- Radiused-Edge Scraper- approx. 1/4" thick x 3/4" wide
- Parting Tool
- Multi-Spur or Safety Drive Center (3/8 or 7/8" Step-Center or equivalent)
- 4-Jaw Chuck- 1" dia. x 8tpi spindle size
- Face shield (and other appropriate safety gear)
- \*Spindle Roughing Gouge (approx. 3/4")

**August Demonstration** (Wednesday, August 10, 2011)



Graeme Priddle will be our demonstrator in August. **PLEASE MAKE NOTE THE AUGUST MEETING IS ON WEDNESDAY, AUGUST 10, not the usual Thursday.** I am not sure what his demonstration will be on, but I am sure it will be an excellent presentation.

Graeme is an internationally recognized wood turner, sculptor, demonstrator and workshop facilitator whose work is found in many public and private collections around the world. He is best known for narrative

sculptural turnings that reflect the environments and passions in his life in New Zealand. During his workshops, he covers a range of topics from basic turning skills, through to more complex turning, carving and surface treatments as well as offering helpful advice on how to find your own creative identity.

His demo topics include:

**'Surface, surface!'**

Graeme will present a myriad of surface treatments and embellishment possibilities. Covers design and influences, tool selection and sharpening, wood selection, carving and texturing techniques, pyrography, coloring, use of multi-media elements and inlays, finishing techniques, and safety.

**'Sculptural Multi-Centre Turning '**

Graeme will present a unique approach to multi-center bowl and hollow turning. Covers, design and influences, basic turning techniques, tool selection and sharpening, wood selection, carving techniques, hollow turning, surface embellishment, finishing techniques, and safety.

**'Vessels of the South Pacific'**

Presents a unique approach to carving on turned hollow vessels. Covers, design and influences, basic turning techniques, tool selection and sharpening, wood selection, carving techniques, hollow turning, surface embellishment, inlaying, use of multi-media elements, finishing techniques, and safety.

Thank you,

Terry

## Membership Rewards (sorry, available to club members only)

### **Library**

A friendly reminder to members with books and /or videos checked out from the library. Please return them at this next meeting.

### **Wood Gathering**

Sign-up sheets will be available to indicate your availability to help with wood gathering. Anyone who learns of a tree or log that is available to the club should notify Jerry Lelack (503 510-1577) or Bob Hutchinson (503 508-3279). The intent is to gather wood, process it to usable pieces, store it at the home of Terry Gerros', and then make it available to members. Terry can be reached at 503 580-5013.

-----  
For Sale: Delta Midi-Lathe with Bed Extension  
Mounted on a Black & Decker WorkMate Stand

No turning tools included.

Excellent Condition

\$250.00

Contact Bob Elgin at Capital Manor - 503-399-1404 or Cell: 503-913-6878

for appointment to inspect the lathe  
-----

### WOODWORKING TOOLS FOR SALE

1. Sawstop Table Saw, Industrial model, 52" fence system, side table, 5hp, comes with new regular cartridge, new dado cartridge, new dado throat plate, mobile base, USED NO MORE THAN 30 MINUTES - NOT EVEN BROKEN IN YET!! \$4700 or may trade for "late" model powermatic or vicmarc lathe.
2. Grizzly 8x75 Jointer with mobile base AND SPIRAL CUTTER HEAD, USED NO MORE THAN 2-3 HOURS, the cutter heads have four cutting sides, have only been used in the factory setting \$800

3. Jet Shaper, comes with mobile base and 1/4" and 1/2' collets for router bits, used two times for a total of about 30 minutes total use \$500
4. Carviewright Carving Machine, model from about 4 years ago, has some accessories and bit set, used for about 2-3 hours, priced to sell at \$800
5. Leigh Dovetail Jig, model D4, with dust collector, used two times, \$250
6. Leigh Mortis and Tennon Jig, with all sizes sold, with brand new Porter Cable router, BRAND NEW AND NEVER USED \$1200

Serious inquiries only contact: Rick Lyle 503-428-2703

-----  
 From Terry Gerros: I have managed to accumulate a number of turning blanks for sale from several people. Oh wait, I brought this on myself.....what started out selling blanks for a buddy who is a disabled vet, has spiraled into.....well, a lot of fun. So, listed below is what I have available. The blocks are close to wholesale price or below and consist primarily of figured walnut (both claro and English), ambrosia maple, persimmon, mimosa, black locust, myrtle wood, figured maple, maple burl, and figured myrtle wood. Most of the blocks are dried and waxed, ready to turn to a finished product. Some of the blocks are green, but waxed. Also available are stabilized pen blanks (figured maple, speckled maple, myrtle wood, buckeye burl), bottle stoppers (buckeye burl), and spindle stock of varying sizes and types of wood. You are welcome to come see the wood and purchase on Saturdays or at my discretion, please call to make sure I am available. I try to make it convenient for everyone, especially those who want to talk woodturning for a bit. My cell number is 503-580-5013.

All the walnut bowl blanks are 3" thick give or take a bit, and are both English and claro walnut, some have both types grafted together, lots of fiddle back, marbling. These blocks are cut from gunstock material.

Pricing for the walnut is as follows:

4 x 4.....\$2.00	8 x 8.....\$8.00
5 x 5.....\$3.50	9 x 9.....\$10.00
6 x 6.....\$4.50	10 x 10..\$12.00
7 x 7.....\$6.00	11 x 11..\$14.00

I also have the following:

Stabilized pen blanks...3/4 x 3/4 x 5 \$2.50 each  
 Bottle stoppers.....3/\$1.00

The other blanks have the price marked on them. So if you are looking for some killer blanks, give me a call.

### **Supplies**

The club purchases a few supplies in bulk and sells it to members at club cost. We routinely have superglue (\$5), black or brown superglue (\$10) accelerator (\$6) and Anchor Seal (\$10/gal). Recently the club purchased a small supply of half round protractors (\$6) used to measure the angle ground on a tool, HSS rods (\$3) 1/4" x 8" used to make the round skewers demonstrated by Bill McCoy at the October meeting, and depth gauge (\$5). Bob Quadros will have the resale items still available at the meeting. Please bring the correct change for the items you want.

### **Club Member Discounts**

- From Terry Gerros: Club orders will be going out on **July 18**. If our order equals or exceeds \$1,000, Craft Supply gives us a 13% discount plus free shipping. If you order from the sales items, you will receive the club discount in addition to the sale discount, making many items available at very attractive prices.
- Club members are registered with Klingspor's Woodworking Shop at [www.woodworkingshop.com](http://www.woodworkingshop.com) or 800-228-0000, they have your name and will give you a 10% discount.



- Hartville Tool will give club members a 20% discount for the next year and a 15% discount after that: [www.hartvilletool.com](http://www.hartvilletool.com) or 800-345-2396
- If you show your club card at checkout time to the cashier at Woodcraft in Tigard they will give you a 10% discount (may not apply to some machinery).
- Exotic Wood is offering a discount of 15% off any orders placed at: [www.exoticwoodsusa.com](http://www.exoticwoodsusa.com) . (This includes sale items and free shipping on orders over \$300). Use promo code ewusaAAW
- Gilmer Wood now offers our club a 10% discount on purchases made there. If you haven't been to Gilmers, it is well worth the trip to Portland, if only to make your mouth water and make you cry if you leave empty handed.
- North Wood Figured Wood can be viewed at North Woods Figured Wood Here's our website [www.nwfiguredwoods.com](http://www.nwfiguredwoods.com) . Please take a look! We're happy to offer you our courtesy 15% discount. Anyone from our club can simply type in "WOODTURNERS" at check out to receive the sale price. No minimum purchase. We've got beautiful Big Leaf Maple, Black Locust, Madronne, White Oak, Ash, Elm and Yew.....turning blanks, slabs, burls and lumber.

## WILLAMETTE WOODTURNERS ASSOCIATION MINUTES OF THE June 9, 2011 MEETING

June 9, 2011/1830 hrs

President Bruce Stangeby called the meeting to order and all present recited the Pledge of Allegiance to the Flag. There was one new member present, John Fitzgerald, who was welcomed by all. President Stangeby then made the following announcements:

- Eric Loftstrom, a popular wood turner in the Northwest, will be our presenter in July 2011, and will demonstrate a variety of topics
- The "Steam-Up" event will be in late July and our club will have a booth and will be demonstrating woodturning on July 30 & 31. Anyone interested in participating should sign up
- One of our members, Nick Stagg, will be teaching sharpening and beginning bowl turning and anyone who wants to take these classes should sign up quickly
- We were reminded of our "wood gathering" committee that gathers wood for the clubs use and we were asked to sign up if we were interested
- President Stangeby mentioned the new form of our nightly wood raffle. Each item to be raffled will have a cup by it for those interested in that item to place one ticket. The winner for each item will be drawn from that cup and not in general.
- President Stangeby mentioned that for the next two months we will have a "critique table" set up for those who want to place items on it anonymously for a critical critique. The idea is a learning process to give constructive feedback on your work to help you grow as a wood turner. He said the table will be set up for the next two months to see how it is received.
- Vice President Terry Gerros made a presentation regarding the clubs Craft Supply order. He said that the order will be placed on June 13, 2011, and can be picked up on June 17, 2011, between 2 PM and 4 PM. After these announcements were made President Stangeby introduced the demonstrator for the evening, Darren Wellington, who is an active member of our club. His demonstration was on making "Clamshell Boxes."

Darren began his talk by saying that he was going to focus on the "steps of making a clamshell box." Darren then said he has been a member of our club for five years and is self-taught, has taken several classes from renowned turners, and many saw dust sessions.

Darren started by saying there are two ways to make a clamshell box: 1) the spindle method with the grain orientation parallel with the lathe 2) the second way is the bowl orientation. Darren said he is concerned with the form and function of the box. He said he is sensitive to the grain orientation and selection of wood to enhance properties of the wood.

Darren discussed his selection of tools for turning a clamshell box. He said he uses a 3/8 spindle gouge, a shaper for hollowing, and a thin parting tool. Darren explained in detail why he chooses these tools and gave a complete explanation of how he uses them in turning a clamshell box.

Darren gave a very complete discussion and demonstration and also said that he has referred to a book, "Woodturning Projects by Mark Baker, page 52." Darren gave a very, very good presentation and it was thoroughly enjoyed by all present.

After Darren finished his demonstration the wood raffle was held and the meeting closed.

Presented by:  
Rick Lyle, Secretary

-----

Burl is a Publication of the Willamette Valley Woodturners

Executive Board

President	Bruce Stangeby
Vice President	Terry Gerros
Secretary	Rick Lyle
Treasurer	Elling Hoem
Board Member	Jerry Lelack
Board Member	Bob Hutchinson

Non-Executive Positions

Newsletter Editor	Bob Thompson
Website Support	Todd Yunker
Librarian	Pete Peterson
Wood Gathering	Jerry Lelack

Coordinators	Rick Harris (High School mentor) Myron Yancey (Steam Up) Bob Hutchinson (State Fair)
New Members	Bob Garvey Tom Morrison
Facilities	Dave Hanselman
Calling Tree	Carl Rodney
Video	Nick Stagg

Send dues & other financial matters to:  
Elling Hoem

3308 Hidden Valley Dr NW  
Salem, OR 97304-2323

Checks payable to: Willamette Valley Woodturners

Send all other club correspondence to:

Bruce Stangeby (WVW President)

432 Stoneway Dr. NW

Salem, OR 97304

email: [bstangeby@comcast.net](mailto:bstangeby@comcast.net)