



The Burl  
Member Chapter

A monthly newsletter for the  
Willamette Valley Woodturners

---

Volume 17, Issue 6

<http://www.WillametteValleyWoodturners.com>

June, 2013

---

Next Meeting

Thursday, June 13, 2013

Center 50+

2615 Portland Rd, NE. Salem, OR 97303

(503) 588-6303

### *A skewed view.....*

June, it is already June! It looks like the summer is going to be as busy as usual. Our demonstrator this month is Ron Gerton from up near the Tri Cities. If you haven't checked out Ron's website, you really need to do so. You've heard of segmented vessels, yes? Check out Ron's DE-segmented vessels. Go to [RonGerton.com](http://RonGerton.com).

July is also going to be a busy month for us. Eric Lofstrom is returning (no pun intended) for an evening demo, all day demo and 2 day workshop (7/11-14). There are sign-up sheets available for the all-day demo, as the workshop has already filled. There may be an option for a 1 day class, but I will discuss that at the meeting.

July is also the month our club participates in the Steam Up in Brooks, Oregon. There will be a sign up sheet with times and dates for you to choose from. This has been a wonderful opportunity for our club to make it's presence known to the community, and we are always well received by those visiting. Everyone is invited to come and participate. If you have further questions, see Myron Yancy.

And lastly, don't forget that in August the State Fair is fast upon us. More on this later. Bob Hutchison is heading this up as he has done in past years. Always a bang up job.

Oh yes, for anyone wanting to submit turnings for competition in the State Fair this year, check out the web for more info....[Oregonstatefair.org](http://Oregonstatefair.org)

Time to head to the shop,

Terry

# Club Business

## Current & Upcoming Events

### June Demonstrator Ron Gerton: Strobe Light Turning

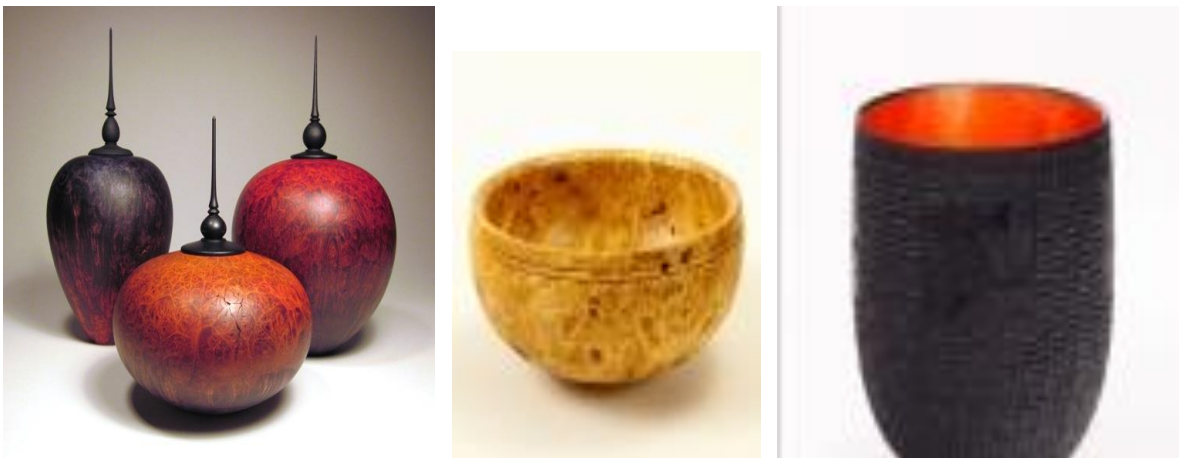


#### ARTIST STATEMENT — RON GERTON

Ron Gerton is a retired mechanical engineer with over 30 years of experience in the nuclear field. He has always enjoyed creating art to keep life in focus. The Art Nouveau style, with its emphasis on natural forms and shapes is his favorite design inspiration. The Bonsai plant, skillfully trained to defy nature and gravity, is a classic example and heavily influences his work. He transforms things that he finds in nature, that are no longer living, into metal for incorporation into his art pieces. These "fossils" now have a permanence that can be enjoyed for generations.

To Ron, nature is the greatest creator of beauty and his challenge is to display it beautifully. Going "green" has long been a major factor in his art. Thrift stores abound with potential art materials. Cast off industrial materials is also a great source. The tens of thousands of small wood pieces from a laser cutting business and puzzle pieces from thrift stores are incorporated into his wood turnings and wall pieces. "Everything is a raw material for something else" is his motto.

### July Demonstrator Eric Lofstrom: Translucent Bowls



Eric had been with us in past years and always gives an enjoyable and informative demonstration. In July Eric will be doing an evening demo featuring translucent bowls.

Using only basic bowl turning tools for this demonstration, he will create an ultra-thin-walled bowl using light to gauge its thickness. In addition to reviewing bowl turning techniques, the main focus of this demonstration is to showcase tool

control techniques used to finesse bowl forms into glowing works of art. This demonstration will show what basic tools and an understanding of tool control will allow you to do with a piece of wet wood. Once you learn to turn translucent-walled pieces, you'll be able to create a consistent wall of any thicknesses in any of your pieces!

Eric will also be here to put on a 2 day workshop (Saturday/Sunday) and either an all-day demo (Friday) or a one day workshop (Friday), depending on the number of participants (7/11-14). The two day workshop will cost \$210.00 per person. The all-day demo will cost \$25.00 per person, but we need at least 16-20 people to make that happen. The one day workshop, if we can't get enough people for an all-day demo, will run \$105.00. Topics include: Spindle and face grain technique building; Triple axis turning, translucent bowls; Skew skills; end grain bowls and boxes; square winged bowls; Technique building treasures: Spinning tops and eggs using skew, spindle gouge, parting tool and simple embellishing techniques; sharpening skills, Edges to shave with. As you can see there is a wide range of topics to pick from and the classes will be tailored to our likes!!

There is limited space for the workshops, 7 people. Please send an email to Bruce or myself and let us know if you plan to attend. A sign-up sheet will be at the next meeting. First come, first serve.

**Turning Tip:** One quick and easy way to improve the cut quality in a torn grain area is to apply paste wax to the area. Simply wipe a small amount of paste wax (I use Renaissance Microcrystalline Wax) into the stubborn area and take another cut with your freshly sharpened gouge. This can be quite effective as the wax helps to stiffen the fibers slightly, so they can cut cleanly.

### **Freedom Pen Project:**

The Freedom Pens Project is an all-volunteer effort spearheaded by the members of SawMill Creek Woodworkers Forums. It is to provide custom hand crafted pens to American servicemen and women overseas. Everyone is invited to participate in the project, all we need is your time and talent to provide handmade pens for our military stationed in foreign countries who are in harm's way. Every Freedom Pen that is delivered serves as a constant reminder to our troops that they are not alone and have our continued support until each and every one has returned home. The project was started in 2004 and to date, wood turners from all over the US have turned more than 145,000 pens.

### **Mentoring Session at Ron Fox's Shop**



If you were wondering what a mentoring session is all about and what goes on there take a look at this. On Saturday, May 18 Ron Fox had a mentoring session with Bob Thompson and a non-club member Dan Zachary. The session started at around nine o'clock and ended at 12:30 pm. Ron, being the pen genius he is, clued them in on how to select a blank for the pen. Then he showed them how to drill out the blank, glue a tube into the blank, and turn and finish the blank. Bob, who has previous experience at turning, was able to finish up his pen and take it home. Dan, being new to woodturning and pen turning, has a little more sanding to do on his pen. Ron had a great time teaching and hopefully Bob and Dan had fun learning. Hopefully, Dan is a new vortex inhabitant in the making. Cross your fingers.

Betty Fox

# Membership Rewards (sorry, available to club members only)

## **Library**

A friendly reminder to members with books and /or videos checked out from the library. Please return them at this next meeting.

## **Wood Gathering**

Sign-up sheets will be available to indicate your availability to help with wood gathering. Anyone who learns of a tree or log that is available to the club should notify Jerry Lelack (503 510-1577) or Bob Hutchinson (503 508-3279). The intent is to gather wood, process it to usable pieces, store it at the home of Terry Gerros', and then make it available to members. Terry can be reached at 503 580-5013.

-----

## **From Terry Gerros:**

I am also a distributor for Stick Fast CA glue, Sharpfast Sharpening systems, and the Holdfast vacuum chucking system. If you have an interest in these products, give me a call or send me an email for details.

## **From Don Wadsworth**

I have an almost new Delta Midi lathe with stand for sale. It includes a 4 jaw chuck with extra jaws, two face plates, a live center and a spur center. Asking \$ 350.00 Could you ask the club members to see if anyone is interested? I could deliver.

Don Wadsworth

541-317-8633

## **Supplies**

The club purchases a few supplies in bulk and sells it to members at club cost. We routinely have superglue (\$5), black or brown superglue (\$10) accelerator (\$6) and Anchor Seal (\$10/gal). Recently the club purchased a small supply of half round protractors (\$6) used to measure the angle ground on a tool, and depth gauge (\$5). Bob Quadros will have the resale items still available at the meeting. Please bring the correct change for the items you want.

## **Club Member Discounts**

- From Terry Gerros: Club orders will be going out on **June 17th**. If our order equals or exceeds \$1,000, Craft Supply gives us a 13% discount plus free shipping. If you order from the sales items, you will receive the club discount in addition to the sale discount, making many items available at very attractive prices.
- Club members are registered with Klingspor's Woodworking Shop at [www.woodworkingshop.com](http://www.woodworkingshop.com) or 800-228-0000, they have your name and will give you a 10% discount.
- Hartville Tool will give club members a 20% discount for the next year and a 15% discount after that: [www.hartvilletool.com](http://www.hartvilletool.com) or 800-345-2396
- If you show your club card at checkout time to the cashier at Woodcraft in Tigard they will give you a 10% discount (may not apply to some machinery).
- Exotic Wood is offering a discount of 15% off any orders placed at: [www.exoticwoodsusa.com](http://www.exoticwoodsusa.com) . (This includes sale items and free shipping on orders over \$300). Use promo code ewusaAAW
- Gilmer Wood now offers our club a 10% discount on purchases made there. If you haven't been to Gilmers, it is well worth the trip to Portland, if only to make your mouth water and make you cry if you leave empty handed.
- North Wood Figured Wood can be viewed at North Woods Figured Wood. Here's our website [www.nwfiguredwoods.com](http://www.nwfiguredwoods.com) . Please take a look! We're happy to offer you our courtesy 15% discount. Anyone from our club can simply type in "WOODTURNERS" at check out to receive the

sale price. No minimum purchase. We've got beautiful Big Leaf Maple, Black Locust, Madronne, White Oak, Ash, Elm and Yew.....turning blanks, slabs, burls and lumber.

Club happenings in our area

(Please visit the club's website listed below for additional information)

Northwest Woodturners (Beaverton, OR)

<http://www.northwestwoodturners.com/>

Meet first Thursday at Franklin High School

Cascade Woodturners (Portland, OR)

<http://www.cascadewoodturners.com/>

Meet Third Thursday at Franklin High School

Beaver State Woodturners (Eugene, OR)

<http://www.beaverstatewoodturners.com/>

Meet fourth Thursday at Woodcraft

Southwest Washington Woodturners (Vancouver, WA)

Dan Baker (President), email: [ridgewoodworks@aol.com](mailto:ridgewoodworks@aol.com)

Meet fourth Wednesday at the Friends of the Carpenter's Center

Burl is a Publication of the Willamette Valley Woodturners

Executive Board

President – Terry Gerros

Vice President – Bruce Stangeby

Secretary – Neva Hutchinson

Treasurer – Elling Hoem

Board Position 1 – Josh Navarrete

Board Position 2 – Walter Thies

Non-Executive Positions

Newsletter Editor      Bob Thompson

Wood Gathering        Jerry Lelack

Librarian                Jerry Lelack

Send dues & other financial matters to:

Elling Hoem

3308 Hidden Valley Dr NW

Salem, OR 97304-2323

Checks payable to: Willamette Valley Woodturners

Send all other club correspondence to:

Terry Gerros (WVW President)

820 Cordon Rd NE

Salem, OR 97317

[gerrost@yahoo.com](mailto:gerrost@yahoo.com)

Web Master

Ron Fox

Coordinators

Myron Yancy (Steam Up)

Bob Hutchinson (State Fair)

New Members

Bob Garvey

Tom Morrison

Facilities

Bryan Thoet

Paul Hirt

Calling Tree

Carl Rodney

Video

Jeff Zens

Larry Curry