

The Burl

A monthly newsletter for the
Willamette Valley Woodturners

e-mail: wwtturners@gmail.com

We are also on Facebook



Member chapter

Volume 27, Issue 2

A non-profit/501(c)(3) corporation

February, 2023

**Next Meeting: 6:30-8:30 PM, February 9, 2023
Salem 50+ Center**



January President's Message:

Hello Willamette Valley Woodturners,

We can tell we are getting closer to the end of winter because the sunrises and sunsets are actually getting further apart. Spring is also getting ready when we look at the buds emerging on the blueberries and all sorts of plants. I'm ready now.

Speaking of getting ready, the Oregon Symposium is building up more speed. This is such a great opportunity to see old woodturning friends and meet new ones. And learn new stuff!

Our demo room is still needing a few signups for both camera operators and helpers. I see six slots open at the point for just the demo times. We could also use volunteers for setup and cleanup and takedown on Thursday and Sunday. Thanks So Much to those who have actually gotten their names on the list. There is a comfort to organizers when the lists can show things are filling in.

The event also needs volunteers for Raffle ticket sales, Instant Gallery, Registration, Auction, and Grand Prize organizing.

For volunteering in any part of the event, email me at prezwvw@gmail.com.

And don't forget, there are some fantastic vendors coming including, but not limited to, D-Way Tools, Big Monk Lumber, Woodturner Wonders, Woodcraft, Niles Bottlestoppers, Woodturner Pro Software, and Trent Bosch Tools. Just think, you can put your hands on the tools. It's not on-line where you have to get a virtual look at them. People are actually there to talk you through it, put reality in your hands.

And of course, the complete line up of demonstrators is amazing. Thanks to Terry Gerros and his ability to grab these folks and get them to come all the way out to Oregon, we will be seeing Stuart Batty, Trent Bosch (in our own demo room!), Mike Mahoney, Nick Cook, Nick Agar, Keith Gottshall, Rebecca DeGroot, Cynthia Gibson, Eric Lofstrom, and Sally Ault. Any one of these could be a treat; all of them is beyond words. World renowned artists and teachers all of them.

Register Today! <https://www.oregonwoodturningsymposium.com/Register/Registration-Store>

The symposium is March 17th through March 19th, Demos ALL DAY long (and Friday evening) with lunches and a dinner provided. And we need volunteers to set up on March 16th.

Beads of Courage lidded boxes can be dropped off at the February meeting. Mark Choitz will be available to collect them for the Symposium. Thanks Mark.

Just a reminder, the regular March meeting at the Center 50+ is canceled. Since we are so involved with the Symposium, March is filled.

But February 9th is a regular meeting and we have our very own member, Dave Pittman, demonstrating and I am looking forward to this one. He explains that he has replicated a family heirloom lidded box that has a locking system involved. Should be interesting.

The Board is meeting this week to consider a couple of things. You may want to involve your time and expertise in either of the following: Scholarships/Grants and Club demonstrating at other venues besides the Oregon State Fair. The sound bite on Scholarships/Grants is that funds could be made available to members for educational purposes. It is quite undeveloped at this point.

Club demos have largely been the Oregon State Fair and Steam Up. With the Steam Up looking like it has faded away, there is still desire to get new venues started up.

These are at least twofold benefits of doing demos. Members who do these really like to engage people and share our love for turning. The club fulfills a part of our mission in bringing the enjoyment of woodturning to people. So if you have expertise or interest in either of these two things, please reach me at prezwvw@gmail.com.

The wood gatherers enjoyed a day at Randy Nichols property gathering Myrtlewood and watching the sawmill operations making it so easy to create blanks. Thanks So Much Randy!

If you haven't paid the dues for this year, you might be getting eliminated from the roster soon. \$35 per year is so low, it doesn't make sense not to stay tuned in. And take a look at AAW if you are not already a member. The articles in the quarterly journal are always informative and helpful. The tidbit I picked up this month has to do with making a knockout bar for the tailstock as it relates to that little pin in the live center. So easy to take it out compared to the usual process. Look it up! And the gallery or the forum are places I go to for inspiration and insight. Very helpful.

Stay Sharp for happy turning!

Thanks everyone,
Marc

Upcoming Presenters and Events

<u>Date</u>	<u>Presenter/Event</u>	<u>Topic</u>	<u>Follow-Up/notes</u>
2/9/23	Dave Pitman	Bowl with Interlocking Lid	Note: There will be no Sawdust Session the following Sunday as it occurred the Sunday before the meeting(2/5/23).
3/9/23	Meeting canceled		Meeting canceled as folks prepare for and attend the Oregon Symposium
3/12/23	Sawdust Session	As needed	9 AM-Noonish, Darcy Tataryn's Studio Contact Darcy for directions *Wearing name tag and labeling tools recommended*
4/13/23	Dick Powell	Windowed Resin Vase	Dick will share his process for creating his pieces including his vacuum and pressure pot methods
4/16/23	Sawdust Session	As needed	9 AM-Noonish, Darcy Tataryn's Studio Contact Darcy for directions *Wearing name tag and labeling tools recommended*

January Sawdust Session: Holy cow! We had a huge turnout of some 27 folks show up for the session last month. Lots of learning, practice, laughter, coffee, and donuts. Something for everyone! The pics below capture some of the energy of the morning.





Woodgathering at Randy's: Okay, so Randy has the sweetest sawmill and log collection! And what a demonstration of expertise and generosity! I neglected to count how many showed up on rainy Jan 14th but would guess close to a couple dozen. As you can see by the pics, Randy milled both myrtlewood and sycamore for the group while others used chainsaws on the side to process some myrtlewood. Watching Randy move logs with his loader, the mill slab them like butter, the mud, the little dog that was sure it was in charge, the automatic saw sharpener, and the sound of chainsaws. It was a good time, folks got a lot of turning pieces, and we can't thank Randy enough (though we hope he'll invite us again)! Included are a couple pics of roughed out pieces by Darcy (sycamore and myrtlewood).







For Sale: by Roger Dirx

1 year old **Laguna 1216** lathe(\$1000+ value). It comes with all the original equipment and some extras, including, 1 **10" bed extension** with all equipment to allow outboard turning of a 16" diameter bowl(\$175 value), 1 **Laguna Light** that mounts on the lathe(\$175 value), 1 homemade **12" tool rest**, 1-solid center point MT2 taper for head stock, and 2 nylon washers for the spindle. The light and bed extension have never been used. The lathe is in excellent condition and there are no issues. I'm asking \$1100 for everything.



Notes from January club meeting:

President Marc Vickery gavelled the meeting to order at 6:30 followed by a recitation of the Pledge of Allegiance. 57 folks were present this evening.

Announcements:

*President Marc led a hearty thankyou to outgoing longtime treasurer Henrik Aberg. Henrik served the club in this and other capacities for some 8 years. He hopes to now have time to actually get back on his lathe! Many, many thanks, Henrik.

-Along with this announcement was the welcoming of new treasurer Dick Powell. Dick hesitantly stepped up with the understanding Henrik would mentor him as he gets up to speed. Thanks Dick!

*Webmaster Jeff Zens: the new website is getting its final touches. One of those will be multiple ways for folks to pay their dues in the hopes they find at least one that is convenient.

*Marc covered the need for Symposium helpers and shared more information about the woodgathering event hosted by Randy Nichols.

*Darcy announced the Feb Sawdust Session change of date to the 5th of Feb.

*Show n' Tell was brief as there were not as many items though they did include some great pieces including a crazy offset turned piece by Jim D, a Josh K creation, and a couple excellent Beads of Courage boxes.

Demonstrators-The evening's focus was called Gizmos and Gadgets and focused on turning related tools and items used by turners in our club.

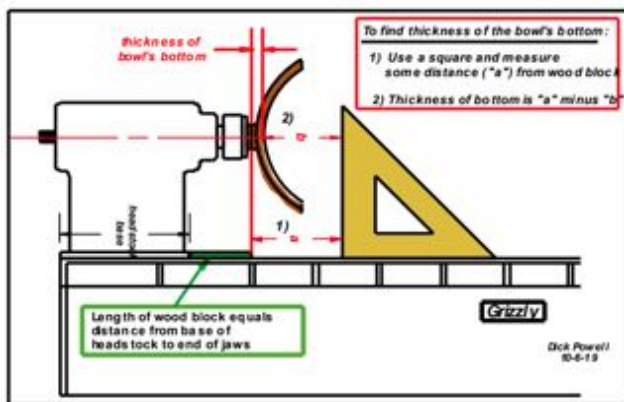
First up: **Dick Powell**. Dick shared 5 items he uses.

- Bib: Despite a face shield and smock, Dick still found that shavings got through and down his neck. His solution was to tape a cloth "bib" to the bottom of his shield and has found it has eliminated the invaders.
- Chuck key holder +: His OneWay lathe has an open pipe as part of the control panel that was constantly getting clogged up with shavings. He turned a dowel to fit and added a piece of wood with a hole that holds his chuck key in a handy location thus achieving two solutions.
- Lathe bed tool holder: This simple rack made of a split PVC pipe screwed to a 2x4 that fits between the rails of the bed keeps the couple tools in use from rolling off accidentally.
- OneWay tray: OneWay lathe headstocks are round on top so to reclaim this location of convenience, Dick made a tray that fit over the top and filled it with the myriad small



items constantly in use.

To Find the Thickness of a Bowl's Bottom:



- Bowl base measuring system: While various gauges are good for wall thickness and pretty good for base thickness, Dick's system gets a precise measurement. It merely uses a board on the bed that lines up with the chuck jaws, a square, and a tape measure. By measuring from the board to the square (eg 6") and the square to the inside bowl bottom (eg 4 1/2") and subtracting the two, you get the bottom thickness (1 1/2").



Marc Vickery-3 items

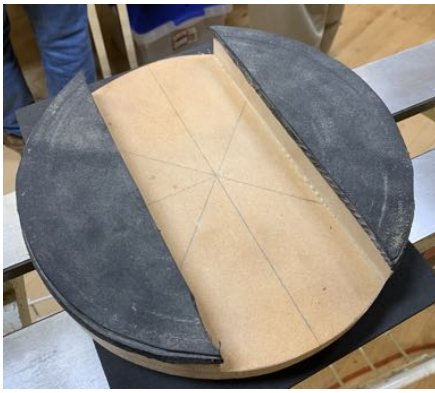


- Dowel/stick depth gauge: There are many commercially available versions as well as hundreds of DIY versions. It is basically a stick that spans from edge to edge on your bowl with a dowel that slides down inside the bowl until it touches the bottom. You then hold the tool on the outside and eyeball it from the side to estimate the bottom thickness. Very simple and surprisingly accurate!

• Wall thickness wire: There are expensive gauges out there, but Marc prefers his DIY version which is basically a thick wire bent into a mostly closed "C" shape. As a DIY item, it can be made for any size bowl including the massive bowls Marc makes that the most common commercial gauges won't fit over...



Jeff Zens-4 items



- Remounting jig: The extreme warping of a rough turned bowl as a result of drying out time makes remounting on the lathe to true up the tenon difficult. Jeff uses a circular jig mounted on his headstock that has a wide groove down the middle which “cradles” the high points of the warped bowl rim. The tenon of the bowl is held in place by the tailstock easily accessed for truing for mounting in the chuck.

- Jeff said he has multiple jigs with varying gap widths for different bowl sizes. He also glued foam on the jig sides for a more secure hold on

the bowl.

- He said this is a design he took from a Glenn Lucas system.



- DIY vacuum chucks: Jeff showed the chucks of various sizes he makes using PVC pipe and wood bases he taps to fit his spindle. He uses a wide foam on the edge to complete the seal. His pump is a small ¼hp model which provides plenty of suction. He touted the Gast

brand as one of the best, but that they run a bit expensive. He showed how the tube from the pump runs through the headstock, but that his is a bit long. Terry G. added that the OneWay brand is quite a bit shorter and has an excellent coupling system. Gary D. mentioned that there are many brands that work. (Darcy shared his super-simple vacuum system at a Sawdust Session with me. Well worth taking a look!)



- Longworth chuck: This is a great big (though it can be sized down as needed) adjustable chuck that holds bowls by the rim for finishing the foot. While it looks complicated to make, Jeff assured us it is not, though he would make his out of quality ½” Baltic birch plywood rather than the ¾” he used saying it would stay flatter and be much lighter.

- DIY vacuum chamber: These chambers are extremely useful for resin (other?) projects. They remove the air from the wood so that when the vacuum is released, the liquid is pulled into the

wood. Brilliant!

- Jeff told the story of its making and the parts used including a big cooking pot, ½” thick clear Lexan top, silicone and gasket material, and fittings for the pump hook up and regulation. Amazing.



Walt Thies: numerous items (I think I missed some)

- Sphere making directions: Walt shared that he’s got his version of the steps in Presenter Files section of Members Only section of our website
- DIY drill jig: Walt shared a brilliant simple jig that fits in the banjo. It has **drill guide bushings** inserted in it so that the drill is at the center height for your lathe. It can be locked at any angle for repeatable hole making.



○ Walt used the system early in his turning to make the wire ornaments he demoed recently and showed some hollow ornaments made with another sized guide. These were drilled at an angle to fit dowels that were a contrasting color. When turned, the dowels produced a great oval shape.

- DIY thin parting tools: Walt has made numerous parting tools from various saw blades including pieces of bandsaw blade and drywall saws. He ground them to shape and made simple handles (if necessary).

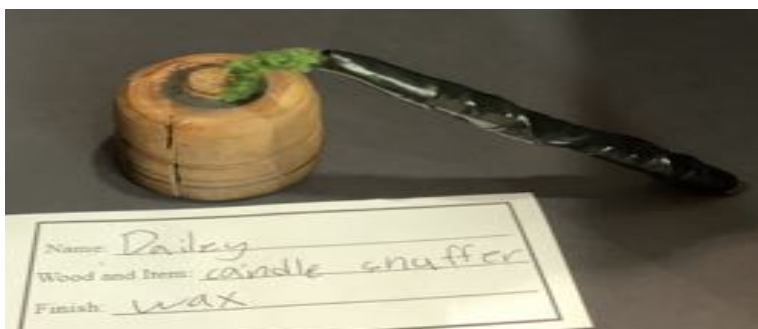


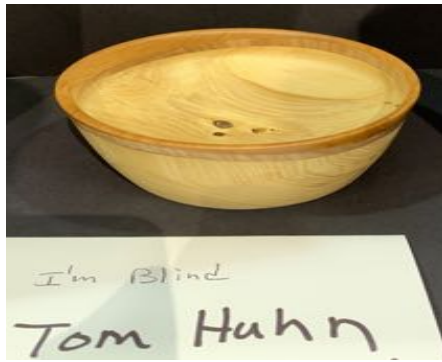
- PVC bearing surfaces: Walt showed some of the ways he uses PVC pieces including as spacers on his tool rest and to surround small tenons or pieces for secure chuck mounting.

Thank you gentlemen for sharing your experience and expertise! I often hear about wood turning as a series of problem solvings and you all demonstrated this in spades. I only shared a bit of my understanding of what you presented, but I'm sure each would be happy to share more if members have questions about what they saw.



Gallery





From Mark Choitz: The Oregon Woodturning Symposium 2023 is just around the corner! For the fourth Symposium in a row, we will be collecting **Beads of Courage** boxes at the event. You made 50 boxes for the last OWS!

The Beads of Courage program teams up with doctors and nurses to help children with long term illness. As kids go through their journey, they receive beads to commemorate their operations and treatments.

Of course they need somewhere to keep their memory beads and that's where we can help. We will be donating our turned boxes to Mary Bridge Children's Hospital in Tacoma, WA.

There are a few details to keep in mind when designing and turning a Beads of Courage box. You can get the details here: 2020-AAW-handout-guidelines.pdf (beadsofcourage.org)

*****IF YOU WOULD LIKE A BEADS OF COURAGE BEAD TO USE IN YOUR BOX CONTACT**

MARK CHOITZ msc6990@gmail.com



- Recommended **interior** dimensions for turned boxes are: 6" diameter (5" min.), 5" height (4" min.)
- Lids for Beads of Courage boxes should be easy for small or ill children to remove or lift
- Wood choice should not have voids, inclusions or cracks in them

How about helping a child today and start a lidded box for the next symposium?



Membership Rewards

Chain Sharpening Service from Jeff Zens: I have an electric chain sharpener and can accurately sharpen your chains and adjust depth stops for your saw chains. This service will restore the chain to "factory-new" condition. Most chains for 18" and shorter bars can be sharpened for \$10.00. Longer chains (up to 30" bars) are \$20.00 Badly damaged chains might be a little bit more. I will also tell you if the chain has reached the end of its useful life, and will not sharpen a chain beyond that point. This price is only available for club members.

Supplies-See Jerry Lelack at club meetings

The club purchases a few supplies in bulk and sells them to members at club cost.

- *CA superglue (\$6), black or brown superglue (\$10) accelerator (\$10).
- *Half round protractors (\$6) used to measure the angle ground on a tool
- *Depth gauges (\$5)
- *HSS 1/4" x 8" Round Tool Bits rods
- *Anchorseal (\$9/gal) and walnut oil (\$20/gal) are available through **Jeff Zens**. You will need to bring your own gallon containers; contact [Jeff](#) to make arrangements.

Wood Gathering

Anyone who learns of a tree or log that is available to the club should notify **Randy Nichols**.

From Terry Gerros

I am a distributor for Stick Fast CA glue, Sharpfast Sharpening systems, the Holdfast vacuum chucking system and Saburrtooth Carving bits. If you have an interest in these products, give me a call or send me an [email](#) for details.

Club Member Discounts

- **Club Member Discounts at Craft Supply:** The club's order is processed the Monday following our Club meeting if it equals or exceeds \$1,000. Craft Supplies offers us a 10% discount **plus** free shipping on almost all items (lathes and other heavy items are excluded) and occasional additional discounts on certain other items and quantity purchases. If you order from Craft Supplies current sale items, you will receive the club discount in addition to the sale discount, making many items available at very attractive prices. For detailed instruction for ordering see the article in the **January 2022 Burl**, available on the club's website. Questions? See [Jeff Zens](#).
- Club members are registered with **Klingspor's Woodworking Shop** at www.woodworkingshop.com or 800-228-0000. They have your name and will give you a 10% discount.
- If you show your club card at checkout time to the cashier at **Woodcraft** in Tigard they will give you a 10% discount (May not apply to some machinery).
- **Exotic Wood** is offering a discount of 15% off any orders placed at: www.exoticwoodsusa.com. (This includes sale items and free shipping on orders over \$300). Use promo code ewusaAAW
- **Gilmer Wood** now offers our club a 10% discount on purchases made there. If you haven't been to Gilmer's, it is well worth the trip to Portland, if only to make your mouth water and make you cry if you leave empty handed.

Club happenings in our area

(Please visit the club's website listed below for additional information)

Northwest Woodturners (Beaverton, OR)

www.northwestwoodturners.com

Cascade Woodturners (Portland, OR)

www.cascadewoodturners.com

Beaver State Woodturners (Eugene, OR)

www.beaverstatewoodturners.com

Oregon Coast Woodturners (Newport, OR)

www.oregoncoastwoodturners.com

Southwest Washington Woodturners (Vancouver, WA)

www.southwestwashingtonwoodturners.com

South Coast Woodturners (Coos Bay, OR)

www.southcoastwoodturners.com

The Burl is a monthly newsletter publication of the **Willamette Valley Woodturners**.

<u>Executive Board</u>		<u>Non-Executive Positions</u>	
President	Marc Vickery	Newsletter Editor	Brian Skaar
Vice President	Larry Curry	Webmaster	Jeff Zens
Secretary	Brian Skaar	Wood Gathering	Randy Nichols
Treasurer	Dick Powell	Librarian	Roger Dirkx
Past President	Jeff Zens	Glue/Supply Sales	Jerry Lelack
Board Position 1	Bruce Stangeby	Steam-Up Coordinator	Jim Devorss
Board Position 2	Randy Nichols	Mentor Coordinator	Paul Hirt
		State Fair Coordinator	Marc Vickery
		Empty Bowls Coordinator	Darcy Tataryn
		Roster Editor	Dick Powell
		Facilities Coordinator	OPEN
		Video Coordinator	Marc Vickery
		CraftSupplies Order	Jeff Zens
		Beads of Courage	Mark Choitz
		New Member Coordinator	OPEN

Send dues & other financial matters to:

Dick Powell

8110 NW Oak Creek Dr

Corvallis, OR 97330

rlpowell@gmail.com

Checks payable to: Willamette Valley Woodturners

Send changes to roster information (address, e-mail, phone#) to Dick Powell (rlpowell@gmail.com)

Send all other club correspondence to the clubs official address:

P.O. Box 151

581 Lancaster Dr SE

Salem, OR 97317 PrezWVW@gmail.com

Club e-mail: wvwtturners@gmail.com