

The Burl

A monthly newsletter for the
Willamette Valley Woodturners
e-mail: wwturners@gmail.com
We are also on Facebook



Member chapter

Volume 28, Issue 1

A non-profit/501(c)(3) corporation

January, 2024

**Next Meeting: 6:30-8:30 PM, January 11, 2024
Salem 50+ Center**



January President's Message:

Well, we have survived another year and are off on new adventures. First order of business is to say **thank you to our departing board members. Jeff Zens** as past president led us through the first couple of years of COVID and continues to develop our new website which I think you will all like. He has also done most of the work on rewriting our bylaws when required. Jeff, take a break. I will try not to bother you until February.

Also, **Bruce Stangby** who has filled most of the board positions at one point or another. And **Randy Nichols** for all he's done and continues to do with his wood gathering leadership. And **Brian Skaar** who has done a great job as Secretary and who got us into the Benton County Fair which is a great place to demo and get some exposure.

Also, **welcome** to our **new board members, Chris Burke, Jeff Wimer, Kip Allen, and Mark Choitz.**

These folks are all giving up a little of their time to help us develop a better club. You should all be asking yourselves which of those positions you might like to fill in the future.

The **AAW symposium** is coming up in **Portland May 23-26**. Several of us will be volunteering at the symposium. If you are willing to help out please let us know. I will put out a sign-up sheet for volunteers. Unfortunately you still have to pay for the symposium but will get to meet a lot of new turners. They are predicting about 1600 turners.

Our demonstrator for January is Sally Ault. Some of you may have seen her at the Oregon Woodturning Symposium last March. I love her little sea urchin boxes.

So, everybody get involved and let's have a good year!
Larry Curry

Year of Challenges from

Chuck Fell

Dec. Holiday ornament

Jan. Bowl with piercing/president's gavel

Feb. Vase with any type of enhancements

Mar. Lidded Box

April Goblet

May Prep for Symposium

June Sphere

July Spinning top

Aug. Calabash Bowl

Sept. Wing Vessel

Oct. Anything with 3 woods

Nov. Platter or Plate

Note: Enhance any project as you wish (ex. texturing, coloring, burning, piercing, etc)

Upcoming Presenters and Events

<u>Date</u>	<u>Presenter/Event</u>	<u>Topic</u>	<u>Follow-Up/notes</u>
1/11/24	Sally Ault	Lidded Sea Urchin Boxes	

1/14/24	Sawdust Session	As needed	9 AM-3 PM-ish, Darcy Tataryn's Studio Wear your nametag and come learn or teach or practice or visit.
2/8/24			
2/11/24	Sawdust Session	As needed	9 AM-3 PM-ish, Darcy Tataryn's Studio Wear your nametag and come learn or teach or practice or visit.



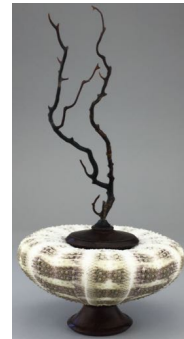
January presenter: Sally Ault

Sally Ault was born and raised in San Diego, California and graduated with a BA in Art with a 3-dimensional emphasis from San Diego State. After a break for work and raising a family Sally began turning seriously in 2001. Sally loves making lidded containers including her signature Sea Urchin Boxes, bowls, embellished pieces and jewelry.

Her work has been honored with awards at a number of shows and she has demonstrated woodturning at many woodturning clubs and at a number of regional and national symposia.

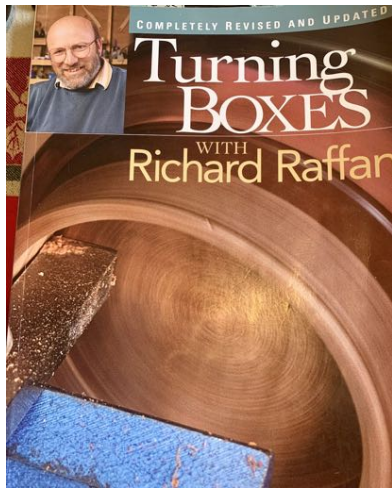
She is a member of the San Diego Woodturners Association, American Association of Woodturners, Point Loma Artists Association and Spanish Village Art Center in San Diego.

www.Sallyault.com
sallyault@cox.net



Word from the Library

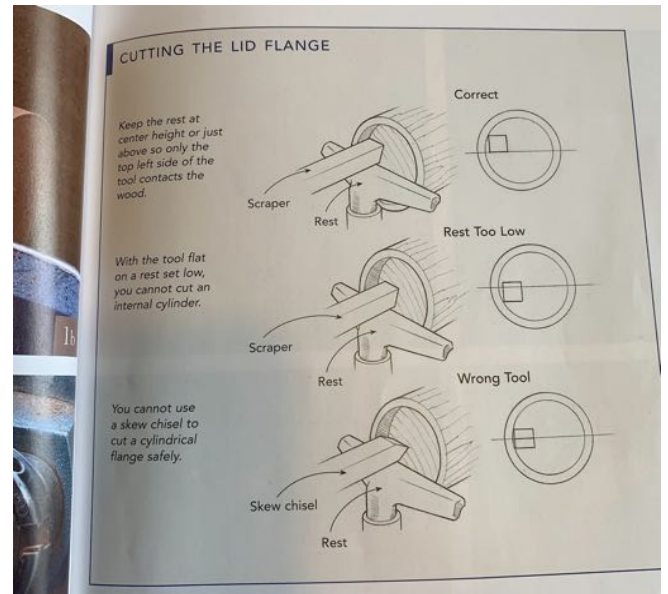
I picked up this book from Roger at the December meeting and looked through it some. Beautiful stuff of course; it's Richard Raffan... But I didn't read very closely as Christmas was fast approaching. I made 5 little lidded boxes to hold small gifts for my kids and, creatively, each had its unique problem. Ha!



After the kids were all gone and I had some time, I looked at the book much closer. All five problems were addressed quite politely... Made one more for fun. Much better. Just the page shown to the right

would have saved me a small frustration. Check it out!

-Brian



December Sawdust Session: Well, I counted 25 folks at various times at this month's session at Darcy's including a few new folk and at least one long absent returning member! Lots of mirth as the question of 'How many people does it take to remove a box lid?' was taken up. Loud laughs!





December meeting notes:

President **Vickery** gavelled the meeting to order for the final time of his tenure at 6:30 and led the group in reciting the Pledge of Allegiance. 46 people were in attendance

Announcements:

Marc: Marc reminded folks about the AAW Symposium taking place in Portland May 23-26. WVV members can get a \$40 discount. Email Marc for more info.

-The last two woodgathering locations still have a great deal of wood available. Marc will be monitoring the availability and keep us informed.

Jeff: The new website is nearing final form and is being looked at by outside eyes for bugs and improvements. Jeff will keep the membership informed of the changeover when it comes. One hassle that will exist is the Craft Supplies ordering feature. He has not been able to make it work with the new site. The current plan is to keep this portion of the old (current) site up for ordering purposes only.

Marc: A question was asked about services listed at the bottom of the Burl not including contact info. Marc reminded folks that we generally don't include personal data to be accessible to the public and to look in the **Roster** in the **Members Only** section of our website for such contact info.

Show-n-Tell: Chuck took the group through the beautiful shared pieces! Chuck reminded us the January challenge is piercing but also reminded folks of the tradition of presenting gavels for the new president.





Presenter: Reed Gray-Threading Jig

A few notes I took from Reed's presentation:

-Reed introduced his threading history sharing that hand chasing threads is tough and the wood species he found that worked well were few. He's found that the jig can be made to work with most wood species.

-When researching doing final cleaning cuts, he found most recommended CA glue to stabilize the wood and said it works okay. He prefers just regular walnut oil.

-Reed prefers to thread small pieces noting that the wood of his larger attempts often moved making the mating of the threads poor at best and useless at worst.



-The threading jig has the same threads as the lathe spindle. Reed said a lock nut epoxied and trued into a waste block is the way to go. The piece can then be moved from being turned on the lathe to being mounted on the jig for making the threads.

-Reed threads boxes from 1 1/4" to 2" in diameter and 2" to 2 1/2" tall.

-He began by mounting his blank in a chuck, roughing it to a cylinder, and then parting off the lid (*I think it would get glued to a nutted waste block at this time.*)

-Reed then hollowed out the base and set it aside. (*Also glued to a nutted waste block at this time*)



Box Lid

-The lid on the nutted waste block was then mounted on the spindle, trued up, and hollowed.



-He positions the jig using a homemade spacer before placing the stop block.
 -Reed then carefully found the center of the lid edge, marked it, and super carefully cut a $\frac{3}{8}$ " deep mortise. This has to be precisely parallel for the threading to come later. To gain that perfect parallel, Reed uses a small metal ruler and eyeballs it carefully using the bed ways as a reference.
 -He cut a small 45° chamfer on the inside edge of the recess for ease in threading later.
 -Reed used a spray shellac on the inside of the lid at this point and the lid was ready for threading.



-The threading jig was set up to do the lid at this time. It had precise adjustment capabilities to get to the perfect height and distance to the side and then can be locked into place. The cutter is mounted in the spindle and the nutted waste block with the box lid is mounted on the jig.



-Reed drew a line on the lid and base as a goal for where he wanted the lid to screw to so the grain would align.

-The lathe is running at a high speed for cutting the threads.

-A knob is turned which advances the lid onto the cutter. The threads cut match those of the jig. Many light passes to make deeper cuts are made and walnut oil is used to get clean threads.

-Reed installs a stop block clamped to the ways so that the jig can be moved back for looking at progress and then repositioned easily.

Box Base



-Reed mounted the nutted waste block with the base on the spindle, trued, and hollowed it.

-He then carefully, carefully, carefully, cut the tenon to be perfectly parallel and $\frac{7}{1000}$ smaller than the mortise and about $\frac{1}{4}$ " deep (*Is this correct? I wrote it in my notes, but it seems like the threads wouldn't overlap if so. Seems like it should be that amount larger. Some clarification would be appreciated*). He cut a tiny relief at the top and bottom of the tenon.

-The bottom was then mounted on the jig for threading.

-The jig is repositioned for outside threading and the base is positioned with the pencil line at about the 11 o'clock position.



-The stop block was repositioned and light cuts were then made and tested until the lid went on as intended!
 Wow!



Matching top to bottom

-Reed then mounted the waste block with lid on spindle and started the process of adjusting the length of the mortise (it is deeper than the tenon of the base is tall) so that when the base is screwed on, the lines drawn long ago would line up. Lots of trial and error, but success in the end!

-The lid was then parted off the waste block.

-The base then went on the spindle and the lid was screwed on for final shaping and finishing.



-Sanding is done at slow speed up to 400 grit.
 -Reed has tried lots of successful finishes, but does not like lacquer as it doesn't hold up long term. For the demo piece, he used the spray shellac inside and out.
 -He then parts off the base and finds (or makes) a



threaded mortise that fits well enough to mount and finish the bottom of the box.



Thank you Reed! I've heard of these jigs before and seen threaded boxes, but they were always a bit of a mystery. Ya made it look easy but easy is the result of a lot of problem solving, trial and error, and practice. Well done.

Adventures in lathe work... A roundabout request came my way a couple months ago asking if I could drill 2" holes 2 feet deep into 8"x48" posts. By my figuring I needed 6 feet of bed length for the log and drill bit and more for the wood chuck and drill chuck. I don't have a 10 foot lathe... However, the holes in the ends of our two huge Grizzly's do line up... So, long bolts tying the two together equaled one long lathe. Lots of flex in the bit and torque on the forstner bits requiring a large pipe wrench to hold the jacobs chuck and lots of sharpening of the bits and voila! 40 logs with big deep holes. Terrible job... Many thanks to Dick Powell for the loan of his steady rest and help with the project!

-Brian Skaar



Above: The set up and bits on extensions in use. Below: The set up with some of the logs in the background.



Membership Rewards

Chain Sharpening Service from Jeff Zens: I have an electric chain sharpener and can accurately sharpen your chains and adjust depth stops for your saw chains. This service will restore the chain to “factory-new” condition. Most chains for 18" and shorter bars can be sharpened for \$10.00. Longer chains (up to 30" bars) are \$20.00. Badly damaged chains might be a little bit more. I will also tell you if the chain has reached the end of its useful life, and will not sharpen a chain beyond that point. This price is only available for club members.

Supplies-See Jerry Lelack at club meetings

The club purchases a few supplies in bulk and sells them to members at club cost.

*CA superglue (\$7), black or brown superglue (\$10) accelerator (\$10).

*Half round protractors (\$6) used to measure the angle ground on a tool

*Depth gauges (\$5)

*HSS 1/4" x 8" Round Tool Bits rods

*Anchorseal (\$9/gal) and walnut oil (\$20/gal) are available through **Jeff Zens**. You will need to bring your own gallon containers; contact [Jeff](#) to make arrangements.

Wood Gathering

Anyone who learns of a tree or log that is available to the club should notify **Randy Nichols**.

From Terry Gerros

I am a distributor for Stick Fast CA glue, Sharpfast Sharpening systems, the Holdfast vacuum chucking system and Saburrtooth Carving bits. If you have an interest in these products, give me a call or send me an [email](#) for details.

Club Member Discounts

- **Club Member Discounts at Craft Supply:** The club's order is processed the Monday following our Club meeting if it equals or exceeds \$1,000. Craft Supplies offers us a 10% discount **plus** free shipping on almost all items (lathes and other heavy items are excluded) and occasional additional discounts on certain other items and quantity purchases. If you order from Craft Supplies current sale items, you will receive the club discount in addition to the sale discount, making many items available at very attractive prices. For detailed instruction for ordering see the article in the **January 2022 Burl**, available on the club's website. Questions? See [Jeff Zens](#).
- Club members are registered with **Klingspor's Woodworking Shop** at www.woodworkingshop.com or 800-228-0000. They have your name and will give you a 10% discount.
- If you show your club card at checkout time to the cashier at **Woodcraft** in Tigard they will give you a 10% discount (May not apply to some machinery).
- **Exotic Wood** is offering a discount of 15% off any orders placed at: www.exoticwoodsusa.com. (This includes sale items and free shipping on orders over \$300). Use promo code ewusaAAW
- **Gilmer Wood** now offers our club a 10% discount on purchases made there. If you haven't been to Gilmer's, it is well worth the trip to Portland, if only to make your mouth water and make you cry if you leave empty handed.

Club happenings in our area

(Please visit the club's website listed below for additional information)

Northwest Woodturners (Beaverton, OR)

www.northwestwoodturners.com

Cascade Woodturners (Portland, OR)

www.cascadewoodturners.com

Beaver State Woodturners (Eugene, OR)

www.beaverstatewoodturners.com

Oregon Coast Woodturners (Newport, OR)

www.oregoncoastwoodturners.com

Southwest Washington Woodturners (Vancouver, WA)

www.southwestwashingtonwoodturners.com

South Coast Woodturners (Coos Bay, OR)

www.southcoastwoodturners.com

The Burl is a monthly newsletter publication of the **Willamette Valley Woodturners**.

<u>Executive Board</u>		<u>Non-Executive Positions</u>	
President	Larry Curry	Webmaster	Jeff Zens
Vice President	Kip Allen	Newsletter Editor	Brian Skaar
Membership Director	Jeff Wimer	Wood Gathering	Randy Nichols
Secretary	Chris Burke	Librarian	Roger Dirkx
Treasurer	Dick Powell	Glue/Supply Sales	Jerry Lelack
Past President	Mark Vickery	Steam-Up Coordinator	Jim Devorss
Board At-Large	Mark Choitz	Mentor Coordinator	Paul Hirt
		State Fair Coordinator	Kip Allen
		Empty Bowls Coordinator	Darcy Tataryn
		Facilities Coordinator	OPEN
		Video Coordinator	Marc Vickery
		CraftSupplies Order	Jeff Zens
		Beads of Courage	Mark Choitz
		Benton Co Fair	Brian Skaar

Send dues & other financial matters to:

Dick Powell

8110 NW Oak Creek Dr

Corvallis, OR 97330

rlpowellsaf@gmail.com

Checks payable to: Willamette Valley Woodturners

Send changes to roster information (address, e-mail, phone#) to Dick Powell (rlpowellsaf@gmail.com)

Send all other club correspondence to the clubs official address:

P.O. Box 151

581 Lancaster Dr SE

Salem, OR 97317 PrezWVW@gmail.com

Club e-mail: wwwturners@gmail.com