

The Burl

A monthly newsletter for the
Willamette Valley Woodturners

e-mail: wwwturners@gmail.com

We are also on Facebook



Member chapter

Volume 29, Issue 7

A non-profit/501(c)(3) corporation

July, 2025



Next Meeting: 6:30-8:30 PM, July 10, 2025
Salem 50+ Center

July President's Message:

Well, Summer is officially here and so is the good weather. Even though we enjoy the outdoors, don't forget to spend some time in your shop. We need items for the show and tell table.

Also, the Benton County fair is coming up at the end of this month. Brian Skaar is managing the signup and coordination. See him to reserve your demonstration slot.

The State Fair is only two months away. Kip Allen is coordinating that one. See him to reserve slots for demonstration. We will need to populate a good size booth so feel free to sign up for several slots.

For those of you who enjoy a road trip, the Rocky Mountain Woodturning Symposium is coming up September 19-21 in Loveland, Colorado. I am going to try to go.

I attended the AAW Symposium I'm St Paul, MN last month and saw several new turners. I have forwarded a few pictures to Brian to place in the Burl as room permits. (See pics below)

Happy Turning and I hope to see you at a meeting soon.

Larry Curry

Year of Challenges from Chuck

Fell: 2025

January: Cereal Bowl or Porringer

February * Hollow Form

March * Plate or Bowl with 4 square edge

April * A turning which has a charred finish

May * 3 Legged Vessel

June * Redo an old turning

July * Something with live edge

August * For the kitchen (or grill or...cooking theme)

September * Candle stick holder off axis

Check out Carl Jacobson's video

<https://www.youtube.com/watch?v=Ftsz8DFXeOM>

October * Something way outside your comfort zone

November * Miniature form no larger than 2" x 2"

December * Christmas Ornament or Holiday decoration

Note: Enhance any project as you wish [ex. texturing, coloring, burning, piercing,?]

Upcoming Presenters and Events

<u>Date</u>	<u>Presenter/Event</u>	<u>Topic</u>
July 10	Carl Jacobson	Carl will demonstrate the use of the Joyner Off-Set Jig in making pendants and ornaments. (These are just two of a ton of uses of this jig.)
July 12	Tool Sale	Steve Wolfenberger's shop sale will take place at 9:30 AM 805 Kouns Dr, Albany OR
July 13	Sawdust Session	As needed: 9 AM-1 PM, Darcy Tataryn's Studio Wear your nametag and come learn or teach or practice or visit!
July 30 -Aug 2	Benton Co Fair	This is a great little fair to see and demo at! Please contact Brian Skaar (brian62skaar@gmail.com) with any questions or interest in participating.
August 14	Eric Loftstrom	TBA

Aug 22- Sept 1	State Fair	To the left are the dates of the Fair; TBA which days we will have a booth.
Sept 11	Brett Williamson	TBA



July Presenter: Carl Jacobson

The Joyner Off-Set Jig consists of an offset plate and an index plate. The offset plate has eight 3/8" x 16 tpi holes with different offsets for mounting on a mandrel and four holes around the perimeter for the index plate attachment. The index plate has 24 8-32 threaded holes around the perimeter for mounting to the offset plate. There are 4 small countersunk holes for attaching a waste block.



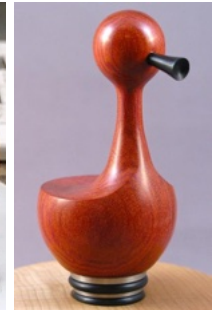
I will be demonstrating pendants and Christmas ornaments. The jig is very versatile and repeatable so if you find a pattern you really like you can duplicate it as many times as you want. The Jig can also be used for bottle stoppers and small lidded boxes. I will bring some of the Niles products to sell along with the jigs at the club meeting.

If there is anything special you want me to bring, you can email me.

Carl

503-939-4565

nilesstopper@gmail.com



June Meeting Notes:



VP Kip banged the gavel to start the meeting at 6:30 as Larry was back in St. Paul at the AAW Symposium. 41 folks were in attendance.

Announcements:

Kip has started the sign-ups for the **State Fair** demonstration booth and put out a special invite to beginners to participate. (The booth generally has 7-8 lathes going and turners are allowed to sell items.)

Kip let us know the board is still in talks about Craft Supplies being our club order company.

Kip then auctioned off the Kevin Jesequel hollowform and the Dave Landers goblet garnering \$55 and \$20 respectively.

I (**Brian**) talked about the **Benton Co. Fair** in Corvallis and that emails would be coming out about signing up to demonstrate. There will be 3 lathes in use over the 4 days going basically from 11AM to 9PM. This is a great little fair to try your hand at turning in front of folks!

Jeff Z gave us more info about **Steve Wolfenberger's** passing and his (Steve's) wish for his tools to be sold with 50% of proceeds going to WWV. Jeff asked for some help with the arranging and set up and numerous folks stepped up. (See note above for sale time and place.)

Chuck F also spoke about the State Fair saying folks should enter items and that many of our members have had success in the judging over the years. *(I looked up the process and it*





can be found in the document below. The entries are due just over a month from now.)
<https://oregonstatefair.org/wp-content/uploads/2025/05/2025-Handcrafts.pdf>

Darcy T let us know the same group of home schoolers that came last year will come again this year in December. Some will be returning turners and some will be brand new so two different projects will be offered. Darcy has heard from many who helped last time, but will need a few more folks for this year's edition. More info will be shared as the event gets closer.



Gallery: Chuck's reworking of a thrift store find was a highlight (and large) as was Darcy's large bowl. Mark C was unable to attend the meeting so we didn't get to see the re-made lidded bowl featured in last month's Burl. I brought in a couple "erosion" attempts using Bill Karow's techniques. Look forward to seeing what folks are making!

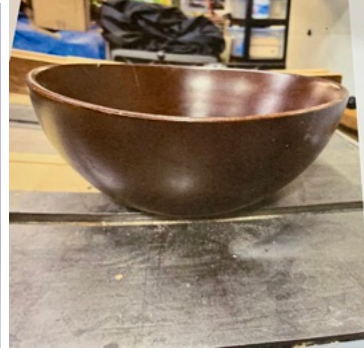


Above: Chuck Fell's remade project, Brian Skaar
 Below: Darcy Tataryn (milk paint used on exterior); Warren Gookin



Above: Philomath MS student bowls

Below: Brian Skaar (eroded bowls); Chuck Fell's pics of original found item used to remake piece above



Presenter Brian Skaar

Watching Erik Loftstrom and Rick Rich use a skew to quickly make a bead has always fascinated me and so I worked at it. But even after a few thousand, I was nowhere near as smooth, accurate, or fast as I am with my spindle gouge. I found that if I think of the edge of my spindle gouge a few mm from the tip as like a skew, I get my best results.

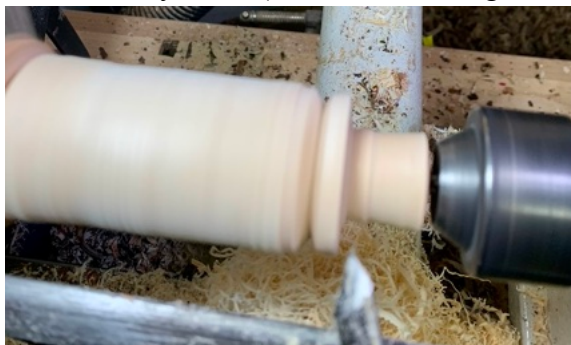
I love the skew for v cuts and long shallow coves though, and with the goal of showing those techniques, I demoed the projects below.



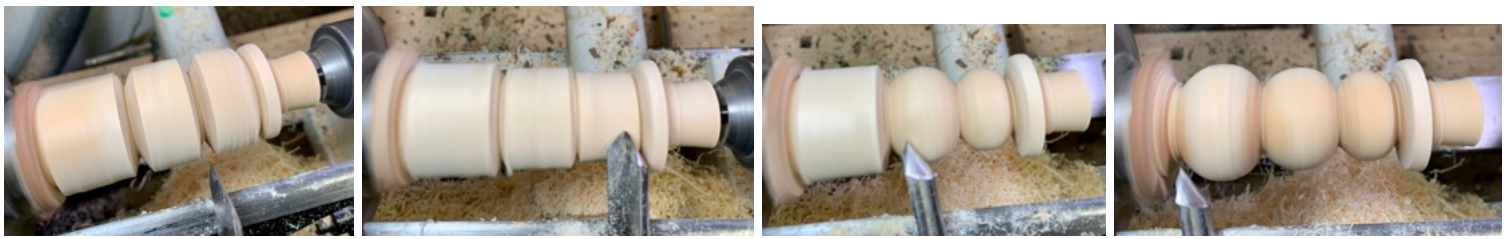
Snowman-I showed how I make a snowman with the goal of it being from one piece of wood and proportional. I used a piece of Sitka spruce branch about 6" long. *(pics are from my lathe at home)*



1. Turn a tenon (I often will turn tenons on 5-10 pieces at a time)
2. Chuck the piece with tailstock up for stability
3. Part in about 1/2" where the base of the snowman will eventually be
4. Turn to cylinder (be careful nearing chuck)



5. Turn the hat (lots of choices here: height, width, shape-bowler, top, banded, etc)
6. Measure from base to bottom of hat brim, divide by 3, mark bottom bead a bit larger than quotient and top bead a bit smaller

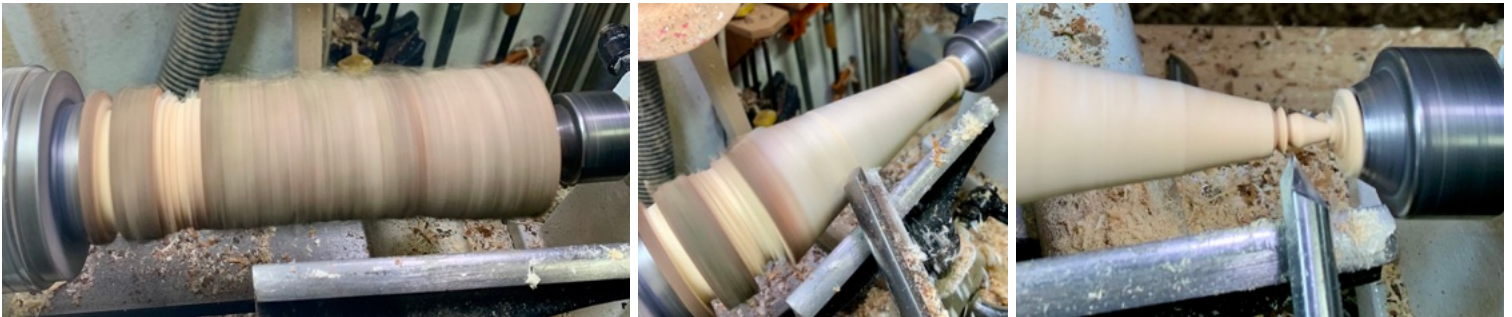


7. Use parting tool or skew to cut divisions
8. Use spindle gouge to turn beads to liking (I make them small to large top to bottom)



9. Finish as liked (I sanded at 220 and applied Carnuba friction wax, but have left raw and let folks take and paint as they wish. I have taken a 1/4" end of a toothpick, painted it orange, and glued it into a drilled hole for a good result.)
10. Part off at slight inward angle so figure sits steady

Tree-Like the snowman, the goal was simplicity and a bit of grace.



1. In chuck with tailstock up, part in a bit where base will eventually be
2. Part in a bit up from base where trunk will be (I usually make this about 1/2" to start with)
3. Rough turn a cone from trunk to top of tree (can just leave pointed or turn a ball or other topper shape)



4. Measure from base of cone to top (or base of topper), divide by number of "branches" desired, and mark on cone (I sometimes make the branches a bit larger near the base and smaller near the top)
5. Use a skew to cut in at lines to keep the branches from breaking when shaping with spindle gouge



6. Cut branches to desired shape (I graduate the depth as I go for proportional look. There are many branch shapes you can do from modern looking straight to very "swooping". I usually finish shaping and parting off the top

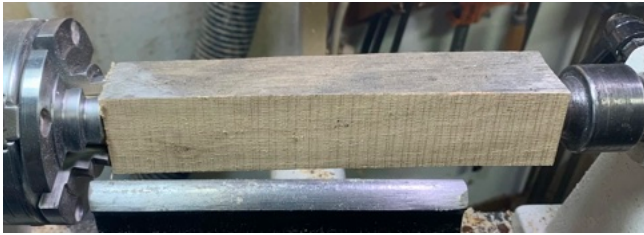
after one or two branches.)



7. Cut the base and trunk to desired look (Some like a bit of bark on the base and bottom branch, others like the base to be smaller than the bottom branch)
8. Finish (I usually sand to 220 and have had good results with different dyes and mostly use carnauba wax to finish) (The one above warped a good deal by the time I was sanding so I opted to use a spray lacquer)

Finial ornament-Well, that was embarrassing... As I began this project I was told I had 10 minutes and in my rush to get going on this 20 minute project, forgot to bring up the tailstock. First touch with the parting tool and out of the chuck the piece of wood came. Oops.

These ornaments are just graceful little 6-7" variations of beads and coves. A small loop of wire glued in the top is a simple way to hang them (some folks use screw in loops). I often dye them a brighter color as the darker wood ones, while beautiful off the tree and in the hand, will get lost hanging on a tree.

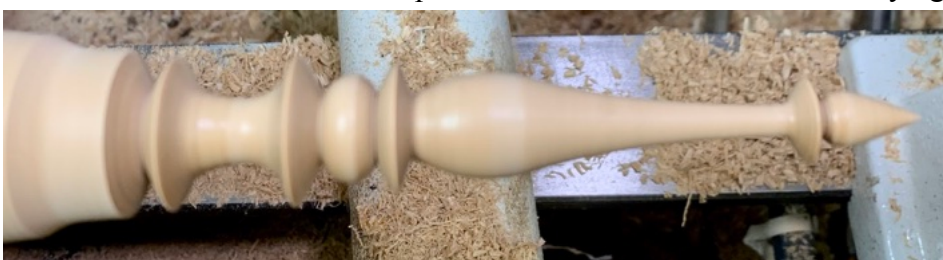


Above: I leave the tip attached until I worked up the spindle 1 1/2-2"; above right-this is where the skew is for me the best, making these long shallow coves to the tip

Below: after finishing the lower long "onion" shape I can turn off the tip from the tailstock; below right shows the attitude of the spindle gouge to make the v cuts much like a skew-also the first bead and a barrel are cut to make a cove



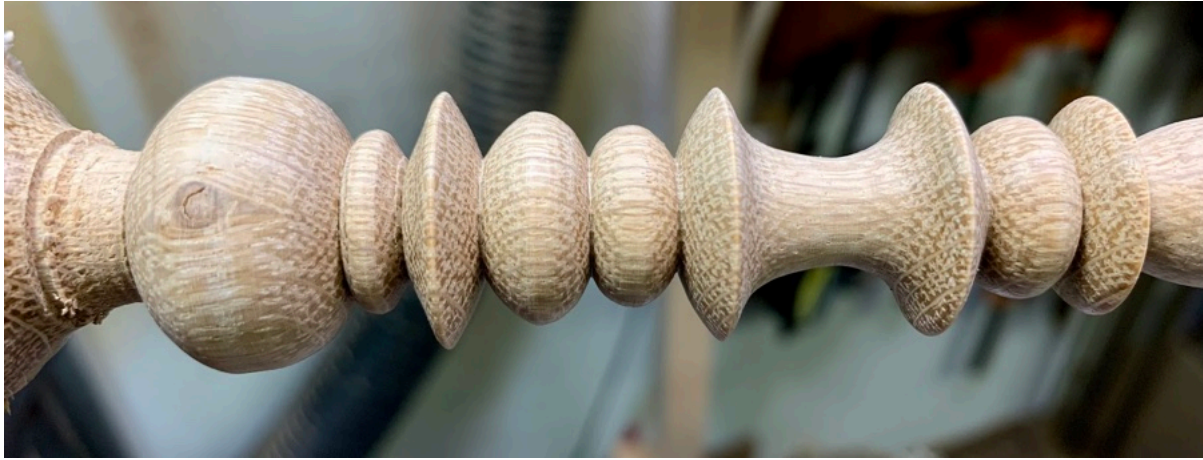
Below: the completed cove and more beads and a "flying saucer" (sharp bead?)





Just below the top bead is a small one I call my “oops” bead as the first time I made one it was because I’d misjudged the end bead and I was able to make this tiny one and now purposefully place one there as I like the effect.

Below: I like oak for these as they stay straight and the grain effects with dyes is wonderful.



Thanks for grabbing some pics of me in action Darcy!



Presenter Walt Theis

Walt has done the research and has found that the weight limit for a tree ornament is 2 ounces!

With that in mind, he showed us how he makes his hollow bodied **angel ornament**.

Walt’s detailed instructions for his angels can be found in the Members Only section of our website under Presenter Files

(<https://www.willamettevalleywoodturners.com/Secure/PresenterFiles.aspx>)

Some pointers I picked up not in his instructions (that I noticed; they may be there):

- Walt uses a brad point drill bit for end grain drilling as he’s found they don’t wander as much

- He uses storyboards as often as possible. He makes new ones for each project out of masonite board scraps (below, 2nd pic)

- Walt showed us how he uses PVC pieces in his chuck to gently and securely hold small delicate pieces of wood (used for the halo in this project)



Christmas Tree #1

Walt showed a tree with a different profile than mine which works well for holding “lights”. This project is also found in the Presenter Files. Included is the original article Walt adapted to make his design.

One difference is that Walt does the coloring and drilling with the tree on the lathe. (Take care to consider overspray) He uses the indexing wheel on his lathe and drills the holes for the “lights” uniformly after the color has dried.

The holes drilled are very small and he likes a Dremel style tool for this.

The lights are merely push pins with “pearl” tops that he cuts to about $\frac{1}{8}$ – $\frac{1}{4}$ ” to glue in.



Christmas Tree #2

This tree Walt called a North Coast Tree.

The two differences from the first are the overall shape and the way the branches are made.

The shape is a slightly coved profile and the branches are grooves cut closely (but evenly) using a sharp parting tool.

The parting tool is a Nick Cook model that has a slightly concave edge resulting in two sharp points for clean cuts (somewhat like a beading tool)

Since Walt didn't want to dull the sharp edges, he showed how he glued a $\frac{1}{8}$ ” brass rod in the flute.

Thanks Walt! Very organized and clear and we'll be able to use your files and try these for ourselves!



A visit with Jeff Wimer (by Brian Skaar)

Two pieces brought in by Jeff to our meetings a while ago really piqued my interest. The first was his huge open segmented vase that was one of the featured pieces on the Oregon Woodturning Symposium poster. The second was a bowl with a beautiful Celtic knot design carved around the rim.

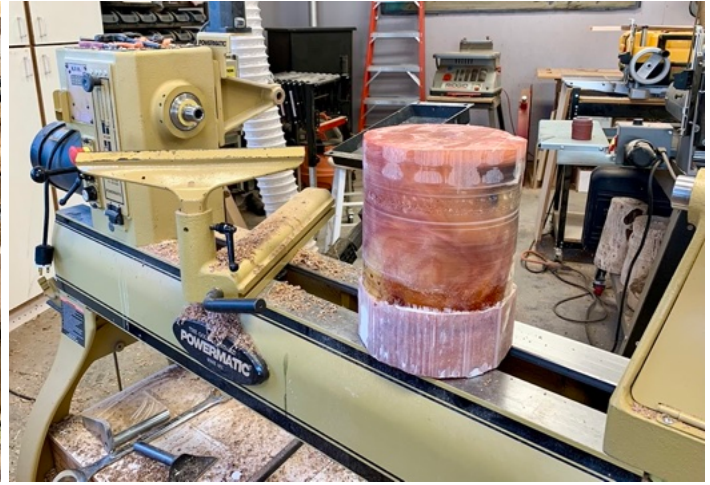
And then, after asking for what projects folks were working on, Jeff sent in a pic of a huge bench he was making!

I had to go see what was going on in his shop...

So about a month ago I got to do so. What I found was that those 3 items were just the tip of the iceberg.

I probably should have taken notes on all that I saw and we talked about, but it was just a really nice conversation and making it into an interview would have taken away from that.

And that maybe should be one of the main points of this article: Jeff is a really nice guy who just happens to also be really curious, smart, patient, and highly skilled in woodworking, woodturning, and many things mechanical and technical! And he's been great for the club as our Membership Coordinator as well!



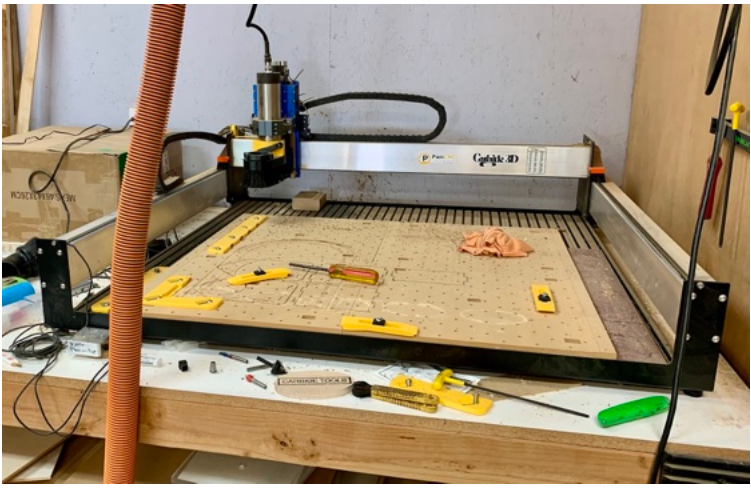
Above: Jeff has a minor case of “Wood Sickness” with a number of shelves around full of wood. He’s been getting into resin turning as he continues to explore.

Below: Left is the open segment jig by Tom Lohman. It’s incredibly precise (and large) and what he uses for his open segmented pieces. It is a very time consuming process, he said. Middle pic is his monster steady rest. It weighs about 80 pounds! Once on the lathe, it stays for a while...



Above: Both Jeff’s table saw and drill press are set up with Inca jigs. Incredible precision...

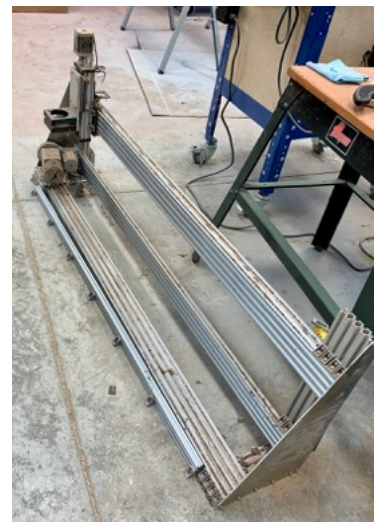
Below: Left is the CNC router he used to make the Celtci knot bowl rim. It’s a big one and he uses it for a ton of different applications. Below right is a Legacy Ornamental Mill. It’s an incredibly versatile router that can do spirals, spirals on tapers, flutes, beads, coves, all kinds of things! He used it to make the legs of the two dressers below (among other furniture in his house).



Above: This is the massive maple topped bench he made. While on locking casters, he doesn't think it will move much; it weighs about a thousand pounds...

Installed is the amazing vise he built the bench to house! It is very cool to see the gears go when in use! (hand and mask are to indicate size)
Right: Curious? Inventive? Yes. He's in the process of making a CNC lathe...

Below: Jeff's massive slab and resin desk on a resin and black walnut file cabinet. The desk legs have some crazy joinery. Below right is a huge segmented vase by his front door.





Jeff threw out numbers like 50 hours to glue up a segmented piece or this much resin or that much CNC set up and was just chill about it all. Guess that's how you've got to be to produce the quality I saw throughout my visit. Thanks so much for hosting, Jeff!

June Sawdust Session: Well, the theory holds! The nicer the weather, the fewer the people at the sawdust session. One dozen folk ventured out to Turner to do some turning. The first thing I noticed when I arrived was a massive beam on Nate's truck. Found out it will be used to install a new and improved way to winch heavy stuff to the second story, a large improvement over the sketchy, but highly entertaining method used at this time.

This month's SS will be at its normal place the Sunday after the meeting. Hope to see you there!



Images taken by Larry Curry of Instant Gallery items at the AAW Symposium in St. Paul

(Thanks Larry! Look like some beautiful pieces!)



From Dale Larson:

Sale of dry rough wood pieces

Jim McAllister, an early and long time member of Cascade, is selling his rough turned pieces and some turning tools. Jim has hundreds of rough turned bowls, platter blanks, vases, hollow forms and boxes. Most of the pieces are dated when roughed and are air dry.

The sale will be **Saturday July 19th starting at 9am**. Jim's address is 3202 SW Willow Pkwy, Gresham.
If you have questions you can email Jim at jimmca7@gmail.com.

Laron Thompson is selling his house in Camas. Laron was a long time member of Cascade. He has donated his wood to Cascade. He wants to sell his equipment. His phone is 360-907-9120. laron thompson

[<wudturner@comcast.net>](mailto:wudturner@comcast.net)

Onieda cyclone system with brackets and ductwork \$150

Gast vacuum pump never used \$200

Carba-Tec mini lathe \$100

Ryobi oscillating spindle sander \$100
Ryobi 12" surface planner (no stand) \$200

From Roger Dirkx: ALL WHO HAVE OUTSTANDING BOOKS AND DVD'S HAVE BEEN CONTACTED AND ASKED TO RETURN THESE ITEMS TO OUR NEXT WEEKS MEETING. THANK YOU.



Membership Rewards

Chain Sharpening Service from Jeff Zens: I have an electric chain sharpener and can accurately sharpen your chains and adjust depth stops for your saw chains. This service will restore the chain to "factory-new" condition. Most chains for 18" and shorter bars can be sharpened for \$10.00. Longer chains (up to 30" bars) are \$20.00. Badly damaged chains might be a little bit more. I will also tell you if the chain has reached the end of its useful life, and will not sharpen a chain beyond that point. This price is only available for club members.

Supplies-See Jerry Lelack at club meetings

The club purchases a few supplies in bulk and sells them to members at club cost.

*CA superglue (\$8), black or brown superglue (\$10) accelerator (\$16).

*Half round protractors (\$6) used to measure the angle ground on a tool

*Depth gauges (\$5)

*HSS 1/4" x 8" Round Tool Bits rods

*Anchorseal (\$9/gal) and walnut oil (\$20/gal) are available through **Jeff Zens**. You will need to bring your own gallon containers; contact [Jeff](#) to make arrangements.

Wood Gathering

Anyone who learns of a tree or log that is available to the club should notify **Randy Nichols**.

From Terry Gerros

I am a distributor for Stick Fast CA glue, Sharpfast Sharpening systems, the Holdfast vacuum chucking system and Saburrtooth Carving bits. If you have an interest in these products, give me a call or send me an [email](#) for details.

Club Member Discounts

- **Club Member Discounts at Craft Supply:** The club's order is processed the Monday following our Club meeting if it equals or exceeds \$1,000. Craft Supplies offers us a 10% discount **plus** free shipping on almost all items (lathes and other heavy items are excluded) and occasional additional discounts on certain other items and quantity purchases. If you order from Craft Supplies current sale items, you will receive the club discount in addition to the sale discount, making many items available at very attractive prices. For detailed instructions for ordering, see the article accessed by clicking on "*read this document first*" which is linked to on the Place Group Order page in the Members Only part of our website. Questions? See [Jeff Zens](#).
- Club members are registered with **Klingspor's Woodworking Shop** at www.woodworkingshop.com or 800-228-0000. They have your name and will give you a 10% discount.
- **Exotic Wood** is offering a discount of 15% off any orders placed at: www.exoticwoodsusa.com. (This includes sale items and free shipping on orders over \$300). Use promo code ewusaAW

- **Gilmer Wood** now offers our club a 10% discount on purchases made there. If you haven't been to Gilmer's, it is well worth the trip to Portland, if only to make your mouth water and make you cry if you leave empty handed.
- **Taylor Woodworks** offers 10% off your online order. Enter ***Guild10*** in the "Discount code or gift card" window when checking out.
- **Rockler** offers 10% off with a mention of membership to WVV as well.

Club happenings in our area

(Please visit the club's website listed below for additional information)

Northwest Woodturners (Beaverton, OR)

www.northwestwoodturners.com

Cascade Woodturners (Portland, OR)

www.cascadewoodturners.com

Beaver State Woodturners (Eugene, OR)

<https://beaverstatewoodturners.org/>

Oregon Coast Woodturners (Newport, OR)

www.oregoncoastwoodturners.com

Southwest Washington Woodturners (Vancouver, WA)

www.southwestwashingtonwoodturners.com

South Coast Woodturners (Coos Bay, OR)

www.southcoastwoodturners.com

The Burl is a monthly newsletter publication of the **Willamette Valley Woodturners**.

<u>Executive Board</u>		<u>Non-Executive Positions</u>	
President	Larry Curry	Webmaster	Jeff Zens
Vice President	Kip Allen	Newsletter Editor	Brian Skaar
Membership Director	Jeff Wimer	Wood Gathering	<u>OPEN</u>
Secretary	Terry Gerros	Librarian	Roger Dirxx
Treasurer	Dick Powell	Glue/Supply Sales	Jerry Lelack
Past President	Mark Vickery	Steam-Up Coordinator	<u>OPEN</u>
Board At-Large	Mark Choitz	Mentor Coordinator	Paul Hirt
		State Fair Coordinator	Kip Allen
		Empty Bowls Coordinator	Darcy Tataryn
		Facilities Coordinator	<u>OPEN</u>
		Video Coordinator	Marc Vickery
		CraftSupplies Order	Jeff Zens
		Beads of Courage	Mark Choitz
		Benton Co Fair	Brian Skaar
		OWS	Mark Choitz

Send dues & other financial matters to:

Dick Powell

8110 NW Oak Creek Dr

Corvallis, OR 97330

rlpowellsaf@gmail.com

Checks payable to: Willamette Valley Woodturners

Send changes to roster information (address, e-mail, phone#) to Dick Powell (rlpowellsaf@gmail.com)

Send all other club correspondence to the club's official address via Dick Powell:
8110 NW Oak Creek Dr
Corvallis, OR 97330

Or via email to:
wvwprez2024@gmail.com
or
wvwturners@gmail.com