

# The Burl

A monthly newsletter for the  
**Willamette Valley Woodturners**

e-mail: [wwwturners@gmail.com](mailto:wwwturners@gmail.com)

We are also on Facebook



Member chapter

Volume 30, Issue 2

A non-profit/501(c)(3) corporation

February, 2026

**Next Meeting: 6:30-8:30 PM, February 12, 2026  
Salem 50+ Center**

## February President's Message:

Dear Willamette Valley Woodturners members,

I hope this message finds you all well. I want to extend my warmest welcome to our new members. We are thrilled to have you join our community of woodturning enthusiasts.

Last month we had a fantastic workshop with Sally Ault. Sally is a very warm and personable lady and my wife and I enjoyed her company immensely. Not only is she an excellent woodturner, but a fantastic teacher as well.

Jeff Zens and Brian are working to set up a club discount with Nova. According to their website, they offer club members a 20% discount. We will keep you posted as soon as we know more.

Just an update on the Karl Hanson class on basket illusions: the class is almost full. They have one spot open for the November class, which is going to be very educational to one and all. We already have two WVW members signed up. I would love to see the last one go to another member of our club.

Thank you all for your dedication and enthusiasm. I look forward to seeing you at our next meeting and as always your feedback is welcome.

Kip Allen

President, Willamette Valley Woodturners.

## January Challenge:

“Dirty Pour” lid with or without bowl  
or lidded bowl

## Upcoming Presenters and Events

Date	Presenter/Event	Topic
Feb 12	Rick Rich	Turnkreis spinning top and tower
Feb 13	Rick Rich class	Subdue the Skew The class is full. If interested in being on the wait list please let Brian know.
Feb 15	Sawdust Session	As needed: time TBA, Darcy Tataryn's Studio Wear your nametag and come learn or teach or practice or visit!
Mar 12	Brett Williamson	Bowl turning: Design and Technique
April 9	Terry Gerros	Magic Salt and Pepper Shakers
May 14	Elizabeth Weber	TBA



## February presenter-Rick Rich

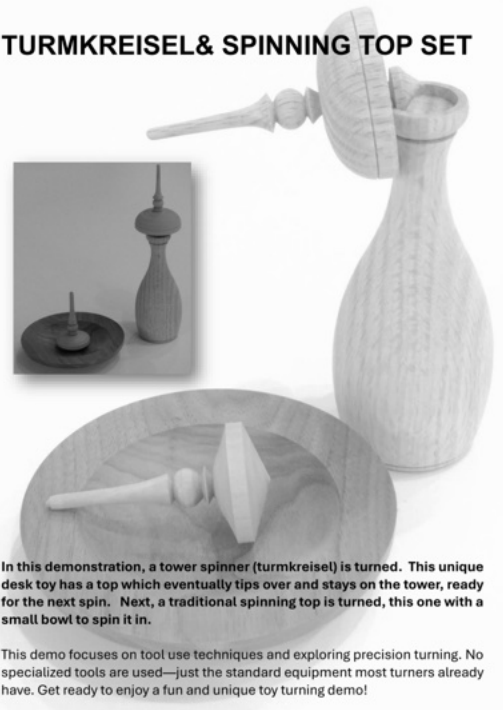
*From Rick:* I am a professional woodturner from Clark County, Washington. I am a founding member, and current president, of the SW Washington Woodturners. I am also a member of the Cascade Woodturners Association, the Northwest Woodturners of Portland, OR and the American Association of Woodturners. I was recently elected president of the Oregon Association of Woodturners and am

looking forward to helping our board make the 2027 Oregon Woodturning Symposium a fun and great opportunity to learn from some of the best teachers in woodturning!

I am a spindle turner by preference, although many items I make include faceplate turning, such as bowls, small tabletops, dishes, and like items. I am a firm believer that speed and efficiency in turning is simply the basic skills mastered, beginning with learning spindle work.

Like most modern-day turners, my schooling did not provide much in the way of woodturning. I learned from mistakes, demos and classes through my local clubs, symposiums and by reading, practicing and being in my shop turning. I studied the old woodturning textbooks for manual arts classes from the early 1900's and went into my shop and completed their courses. Each book starts with turning a parallel cylinder, smoothed by the skew chisel.

### TURMKREISEL & SPINNING TOP SET



In this demonstration, a tower spinner (turmkreisel) is turned. This unique desk toy has a top which eventually tips over and stays on the tower, ready for the next spin. Next, a traditional spinning top is turned, this one with a small bowl to spin it in.

This demo focuses on tool use techniques and exploring precision turning. No specialized tools are used—just the standard equipment most turners already have. Get ready to enjoy a fun and unique toy turning demo!

## January Meeting Notes:-Brian

**President Kip Allen** gavelled to the meeting to order at 6:30 followed by a recitation of the Pledge of Allegiance.

54 people were in attendance including 3 visitors and 3 new members. Welcome!

Also in attendance was **Bob Hutchinson**, who's a nearly 20 year member. Bob received a well warranted warm reception.



*Jeff and Mark taking care of business before the meeting.*

## Announcements:

**Kip** reviewed a couple board discussion items including his aim to grow our membership and looking into business partnerships to help fund our outreach and education activities.

**Brian** reminded folks that the '25 board had okayed a **symposium registration scholarship**. The scholarship would go to one member per year, would cover the registration (not travel and such), and the recipient would be expected to give a review of their experience to the club. The form can be sent upon request or picked up at a meeting from **Terry Gerros-secretary**. **Brian** asked those in attendance if they would be interested via a show of hands in a Friday class with Feb presenter Rick Rich. Well over a dozen raised their hands. (The class has been arranged and filled with the addition of a few from Beaver State Woodturners.)

**Darcy** announced he has a source for fresh holly wood from a local tree farm and asked for a show of hands of those interested. Many folks were and Darcy will let us know when that gathering will take place.

**Kip** had 3 worthy gavels to choose from for his time as president and chose the offering from **Brian Skaar**.



*Larry and Chris looking over Jeff's piece*

**Gallery:** We had a great collection of pieces to be shared at the January meeting. Big thank you to **Darcy** for leading us through the pieces and pointing out things that stood out to him and that people should take a look at.





Above: Mark Choitz, Terry Gerros  
Below: Rick Jarosz, Brian Skaar



Above: Mark Choitz, Steve Rice (apologies for the burry pic)  
Below: Doug Neve, Sally Ault







Above: Jeff Wimer (bottom of platter below), Brian Skaar



Above: Jeff Wimer







Above: Philomath MS students Calla and Kimberlynne, Mike Paul  
Below: Dave Pitman, George Long



## January Presenter: Sally Ault -Brian

[https://www.willamettevalleywoodturners.com/Secure/Files/Presenter\\_Files/S\\_Ault\\_3.pdf](https://www.willamettevalleywoodturners.com/Secure/Files/Presenter_Files/S_Ault_3.pdf)



Sally brought her humor, turning skill, and well thought out process development to show us her "Dirty Pour" technique. It's a way to use low cost materials to create unique colored effects for projects. Her primary use is in creating lids for bowls, but the technique could be used for many projects.

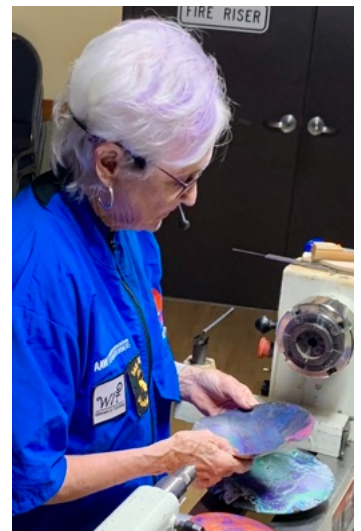
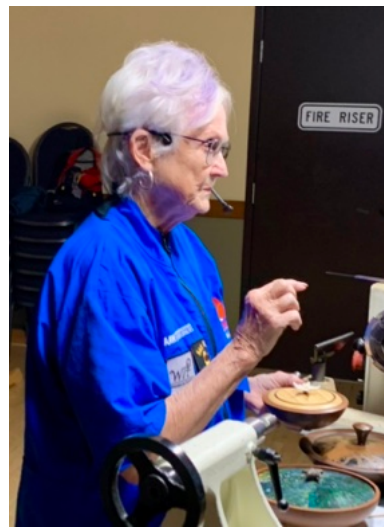
Sally generously gave us a handout to include for member use. With permission, I amended it to include tools and materials needed. You can find it in the Presenter Files in the Members Only section of our website (address above under title).

While the worksheet provides the basic steps, Sally provided a ton of extra considerations and tips. I probably

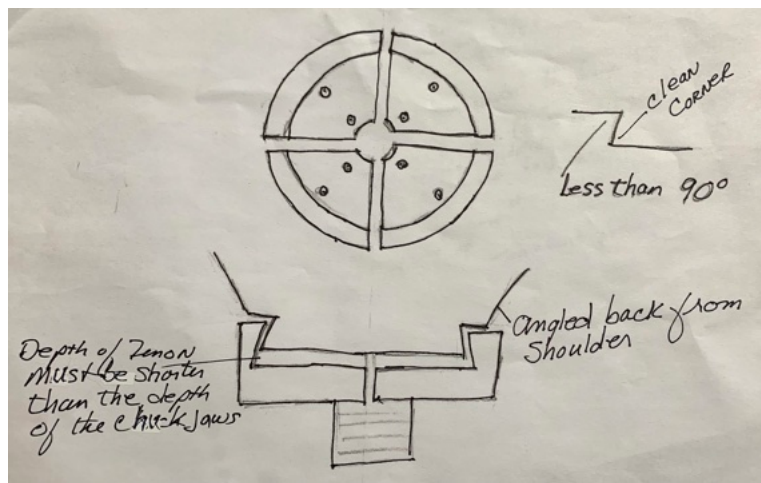


only caught a small percentage, but will try to limit my notes below to the extras not in her instructions.

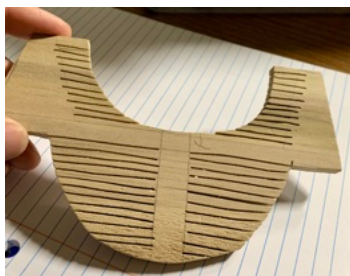
Left: Sally said she likes a wider rim to frame the lid. Right: The lid wood can be thin and any wood-this one was a bamboo cutting board. Loves fun knobs! Far right: Sally tried a pour in a bowl and did not like it. Her next try will utilize hanging it upside down.







Above: Sally's diagram used to emphasize the importance of the tenon; dinner knife parting tool used for various things  
 Below: Hot gluing reusable waste block with a perfect tenon (not shown is using tailstock to press block onto lid wood and against chuck); talking downhill cutting with teaching tool; piece reversed with waste block tenon in chuck



Above: 2 of Sally's teaching tools used to show "downhill" cutting direction; 2 Cindy Drozda live center inserts used  
 Below: shaping underside of lid, creating mortise ( $\frac{1}{8}$ " deep), decorated with a bead, sanding with inertia sander  
*During this process Sally told the story of teaching wounded Veterans in the San Diego area saying how teaching, especially this population, taught her as much as she taught them.*







Above: (not shown is removing the waste block using denatured alcohol-a few drops and the hot glue easily let go); lid mounted in chuck via mortise; turning a graceful dome that will allow the paint to flow; sands to 240

Below: break time had folks checking out the Skilton inertia sander

(<https://www.packardwoodworks.com/sanding-selfpow-skilsand.html>); hot glues waste piece to bottom as a handle (in the class we hot glued to blue tape to protect the wood); Sally said she now covers the bottom with contact paper to protect the bottom (not shown is the primer/sand/primer step); Sally talked about the additives used-Flotrol to help the paint self level and silicone to sort of bubble up through layers-achieves “stars in the night sky” effect; Sally got her silicone by spraying it from a can into a container (*Mark C said pure silicone is available in small bottles used for treadmill lubrication*); Sally does not use silicone in the base color (black or white)



Above: putting cheap acrylic paint in small cups-did 4 colors (had to add some water as paint was thick from time unused); black base coat; cup of layered paint upside down on wet black

Below: lifted cup needed some scraping out-said not to stir; turns brown- and then tipping lid to get flow going in all directions; heat gun used to get the silicone bubble to rise up (said to use lightly)





Above: 2nd lid with different colors and sitting on their cups making a “dirty” mess; Sally said you have to scrape under the edge to remove drips; Sally added a few drops of color and dragged a skewer to create another effect  
 Below: 3 lids done; Sally said lids need about 24 hours to dry and that they dry to a matte finish; she uses a spray lacquer to attain gloss finish; next step is to make bowl to fit lid-recommends it on the loose side as wood will change shape and to be thoughtful in wood color choice; (Kip and his new gavel-forgot to add pic above and can’t do so without whole document going crazy...)



*Thank you Sally! Many folks are seeing the myriad ways woodturning has gone, especially in the enhancing area with carving, texturing, and color. This gives us a fun idea to try without breaking the bank to tool up!*

### **Sally Ault Saturday class: “Dirty Pour” lidded bowls-Brian**

Well, the class got off to a rough start as 2 people cancelled the night before due to family commitments and 3 woke up ailing! Yeesh! But those of us there got after it and made a mess.

Sally went into more depth on all the steps from the demo and added a bunch of info about the handles for the lidded boxes.

And, of course, we all put the learning to use in making our own!





Below: Dennis got after one his lids using white as a background which had Sally declare “Eureka”!



Above: We all made a lid and left it unpainted to practice making a bowl to fit

Below: Sally went over considerations and demonstrated making handles for the lids; she said she’s constantly on the lookout for sticks and knobs at shops and sales







*I let mine dry for a week and the paint was solid enough to cut with a negative rake (skew) and make a sharp edge. The small skew I used allowed me to get most of the underside of the lid on the lathe. Lots of laughs!*



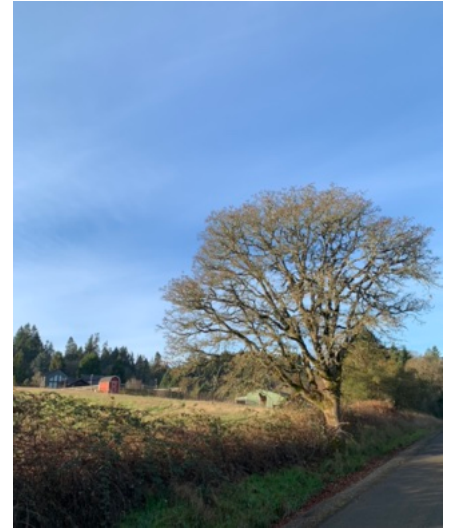
### **Sally Ault Sunday class: Textured Top Box and Tool-Brian**

Well, no issues with no-shows Sunday! Full house and the chips were flyin'! Over the years, I've marvelled at Jim Devorss' top boxes. I knew the basics of how he made them but the extra steps with jam chucks and such seemed daunting.

But Sally made it doable and we all came away with technique and a ridiculous little texturing tool that works amazingly well!

Sally sent directions for making these boxes which were handed out but are not posted for the club. I'm sure you can get a lesson from one of the participants though if you'd like to learn the process!

The day was beautiful and had me stopping at the side of the road near Darcy's to grab a couple pics. Kip and Sally probably thought I was having a medical episode and stopped to help me out...





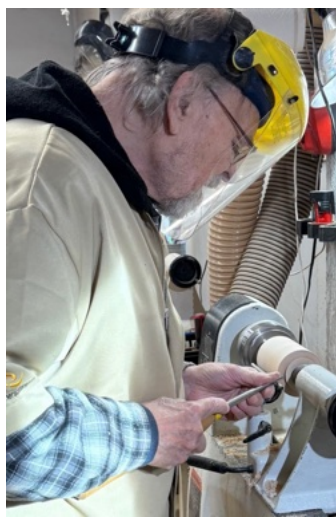
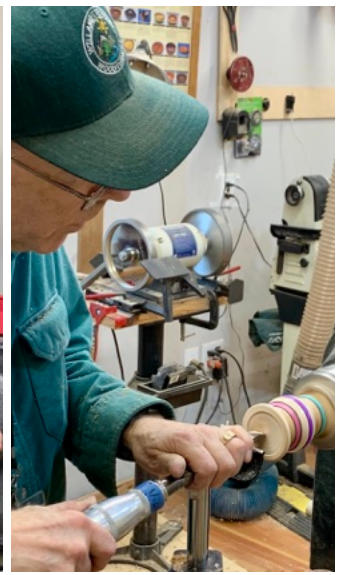


Above: making the top  
Below: making and using the chatter tool



Lots of coloring with felt “brushes”





*As I was making my piece, I was thinking about how I could apply the learning to other projects. I found the lighter texture made by this chatter tool and the felt brushes lend themselves to elegant projects beyond tops.*

*Great stuff! Thanks Sally!*



### **HS class #5:** -Brian

Well, Darcy got ambitious and we had kids turn bowls this month! This was their 5th class this year-some were here last year-so Darcy set up a wet blank on a face plate on each lathe. It was a great use for the sweet gum in his parking area that wasn't getting snapped up by members.

Darcy did a complete demo as we knew there would be a huge range in the speed of kids getting through the project, and then we cut 'em loose to make shavings!

Of course, the results were extremely varied, but a lot of fun was had. Thanks Jeff, Marc, and Roger!



Marc had his hands full as a first time turner showed up!



We worked with kids to make the bowls as thin as they could to try and prevent cracking. A couple were thin enough to show light through readily.







## **What's on my lathe!**

*From Darcy:* January was a good month for learning at my shop. I had a few people drop by with questions about projects they were working on.



We had Sally Ault classes for two days, one of which I attended. I learned enough to have completed 3 sample projects from the class. (right)



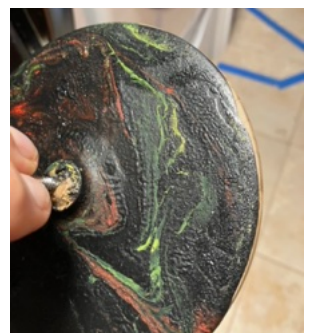
**Kip** and I were talking and he mentioned he had a bowl/platter beaded that was intimidating him. I can understand why! It's about 16" across and beaded inside and out!



**Doug Neve** finally broke down and upgraded his lathe situation. Wasn't real hard-his original lathe is a 1939 model without a bearing to be seen. And a whopping 7" capacity... He went with the big Harvey and it's a beauty. I got to help him put it together along with another couple of his friends and his two adorable, rowdy dogs. Pictured is Patsy who uses her tail to sweep the shavings quite effectively.



**Mark Choitz** got after the "Dirty Pour" on his own and I was quite thankful. I have been putting my fails in this section of the Burl for months and







finally got someone else's disaster. Ha! Kinda looks like iguana skin to me. Oh, I guess Kip did share the funnel he made...

Anyway, Mark figured his mixture was off and so he gave it another go with much better results. Kudos!



## Membership Rewards

**Chain Sharpening Service** from Jeff Zens: I have an electric chain sharpener and can accurately sharpen your chains and adjust depth stops for your saw chains. This service will restore the chain to "factory-new" condition. Most chains for 18" and shorter bars can be sharpened for \$10.00. Longer chains (up to 30" bars) are \$20.00 Badly damaged chains might be a little bit more. I will also tell you if the chain has reached the end of its useful life, and will not sharpen a chain beyond that point. This price is only available for club members.

### **Supplies-See Jerry Lelack at club meetings**

The club purchases a few supplies in bulk and sells them to members at club cost.

\*CA superglue (\$8), black or brown superglue (\$10) accelerator (\$16).

\*Half round protractors (\$6) used to measure the angle ground on a tool

\*Depth gauges (\$5)

\*HSS 1/4" x 8" Round Tool Bits rods

\*Anchorseal (\$9/gal) and walnut oil (\$20/gal) are available through **Jeff Zens**. You will need to bring your own gallon containers; contact [Jeff](#) to make arrangements.

### **Wood Gathering**

Anyone who learns of a tree or log that is available to the club should notify **Marc Vickery**.

### **From Terry Gerros**

I am a distributor for Stick Fast CA glue, Sharpfast Sharpening systems, the Holdfast vacuum chucking system and Saburrtooth Carving bits. If you have an interest in these products, give me a call or send me an [email](#) for details.

### **Club Member Discounts**

- **Club Member Discounts at D-Way:** WVV members get a 10% discount on a group order (See the September 2025 Burl for complete details). Jeff Zens manages the program.
- Club members are registered with **Klingspor's Woodworking Shop** at [www.woodworkingshop.com](http://www.woodworkingshop.com) or 800-228-0000. They have your name and will give you a 10% discount.
- **Exotic Wood** is offering a discount of 15% off any orders placed at: [www.exoticwoodsusa.com](http://www.exoticwoodsusa.com). (This includes sale items and free shipping on orders over \$300). Use promo code ewusaAAW



- **Gilmer Wood** now offers our club a 10% discount on purchases made there. If you haven't been to Gilmer's, it is well worth the trip to Portland, if only to make your mouth water and make you cry if you leave empty handed.
- **Taylor Woodworks** offers 10% off your online order. Enter ***Guild10*** in the "Discount code or gift card" window when checking out.
- **Rockler** offers 10% off with a mention of membership to WVV.

## Club happenings in our area

(Please visit the club's website listed below for additional information)

**Northwest Woodturners** (Beaverton, OR)

[www.northwestwoodturners.com](http://www.northwestwoodturners.com)

**Cascade Woodturners** (Portland, OR)

[www.cascadewoodturners.com](http://www.cascadewoodturners.com)

**Beaver State Woodturners** (Eugene, OR)

<https://beaverstatewoodturners.org/>

**Oregon Coast Woodturners** (Newport, OR)

[www.oregoncoastwoodturners.com](http://www.oregoncoastwoodturners.com)

**Southwest Washington Woodturners** (Vancouver, WA)

<https://www.southwestwashingtonwoodturners.org/>

**South Coast Woodturners** (Coos Bay, OR)

[www.southcoastwoodturners.com](http://www.southcoastwoodturners.com)

---

**The Burl** is a monthly newsletter publication of the **Willamette Valley Woodturners**.

<u><b>Executive Board</b></u>		<u><b>Non-Executive Positions</b></u>	
President	Kip Allen	Webmaster	Jeff Zens
Vice President	Brian Skaar	Newsletter Editor	Brian Skaar
Membership Director	Mark Bollenbeck	Wood Gathering	Marc Vickery
Secretary	Terry Gerros	Glue/Supply Sales	Roger Dirx
Treasurer	Jeff Wimer	Steam-Up Coordinator	<b><u>OPEN</u></b>
Past President	Larry Curry	Mentor Coordinator	Paul Hirt
Board At-Large	Jerry Lelack	State Fair Coordinator	Kip Allen
		Empty Bowls Coordinator	Darcy Tataryn
		Facilities Coordinator	<b><u>OPEN</u></b>
		Video Coordinator	Marc Vickery
		D-Way Order	Jeff Zens
		Beads of Courage	Mark Choitz
		Benton Co Fair	Brian Skaar
		OWS	Mark Choitz, Larry Curry, Brian Skaar
		Anchorseal/walnut oil	Jeff Zens

Send dues & other financial matters to:

Jeff Wimer

305 Cherry Ln NE

Albany, OR 97321

[jwimer5@comcast.net](mailto:jwimer5@comcast.net)

Checks payable to: Willamette Valley Woodturners



Send changes to roster information (address, e-mail, phone#) to [jwimer5@comcast.net](mailto:jwimer5@comcast.net)

Or via email to:

[wwwprez2024@gmail.com](mailto:wwwprez2024@gmail.com)

or

[wwwturners@gmail.com](mailto:wwwturners@gmail.com)